



Sony Ericsson

Working Instructions

- mechanical -



*Aspen
M1i, M1a*



CONTENTS

1	Exterior Views.....	4
1.1	M1i.....	4
2	Tools	5
3	Disassembly.....	6
3.1	Battery Cover.....	6
3.2	Battery.....	7
3.3	Stylus	7
3.4	Front Cover Assy	7
3.5	Rear Cover.....	10
3.6	LCM	11
3.7	Speaker Box Assy.....	13
3.8	Phone Antenna.....	14
4	Replacement	16
4.1	Battery Cover.....	16
4.2	Stylus	16
4.3	Mic Mesh.....	16
4.4	Keyboard	18
4.5	Co-Brand.....	20
4.6	Front Cover Assy	24
4.7	Vibrator	27
4.8	Power Key.....	28
4.9	Volume Key	30
4.10	RF Rubber.....	31
4.11	Rear Cover	32
4.12	ZIF Connector Kapton.....	36
4.13	Receiver	36
4.14	LCD & LCM Shielding	37
4.15	Speaker Box Assy.....	39
4.16	Phone Antenna.....	39
4.17	Screw Cover	39
4.18	Camera Cap	40
4.19	Camera Sponge.....	41
4.20	Dome Sheet	43
4.21	Speaker Gasket	46
4.22	Water Indicator	47
4.23	SIM Mylar	47
4.24	LCM Kapton	49
4.25	Shielding Cover BB.....	50



4.26	Shielding Cover RF	51
4.27	Camera 3.2 M pixel	52
4.28	Core Unit Label.....	55
5	Reassembly.....	56
5.1	Phone Antenna.....	56
5.2	Speaker Box Assy.....	57
5.3	LCM	58
5.4	Rear Cover	60
5.5	Front Cover Assy	61
5.6	Stylus	64
5.7	Battery.....	64
5.8	Battery Cover.....	64
6	Revision History	66

***For general information about mechanical repair related issues, refer to
1220-1333: Generic Repair Manual - mechanical***



1 Exterior Views

1.1 M1i



2 Tools

SPECIAL TOOLS

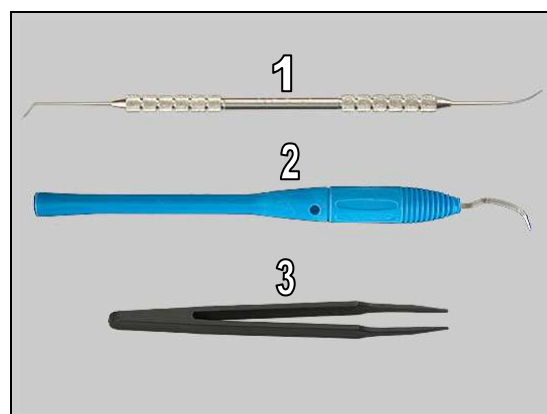
1. Torque Screwdriver
2. Bits (T5)
3. Front Opening Tool
4. Flex Film Assembly Tool
5. Guitar pick
6. Camera Removal Tool



For part no's on the tools above, refer to the 'Tools Catalogue/Matrix'!

STANDARD TOOLS

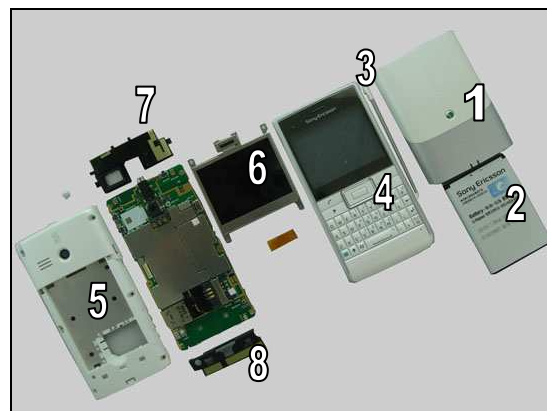
1. Dentist hook (needle-shape)
2. Dentist hook (curve-shape)
3. Tweezers (ESD-safe & non-metallic)



3 Disassembly

The disassembly is done in the following order:

1. Battery Cover
2. Battery
3. Stylus
4. Front Cover Assy
5. Rear Cover
6. LCM
7. Speaker Box Assy
8. Phone Antenna

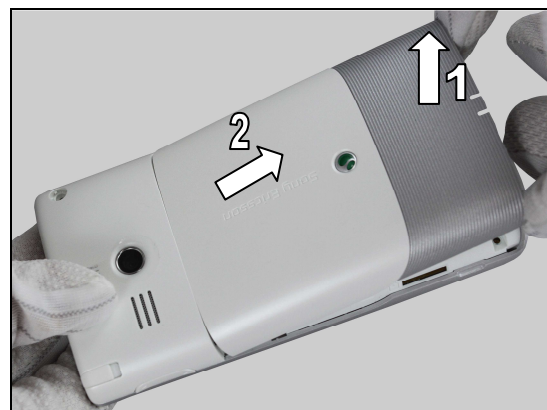


3.1 Battery Cover

Insert the Guitar Pick to release the Battery Cover.



Do the same on the opposite side.



- Raise the Battery Cover at the bottom.
- Lift it off

Disassembly

3.2 Battery

Insert the Front Opening Tool and raise the bottom of the battery to release it.

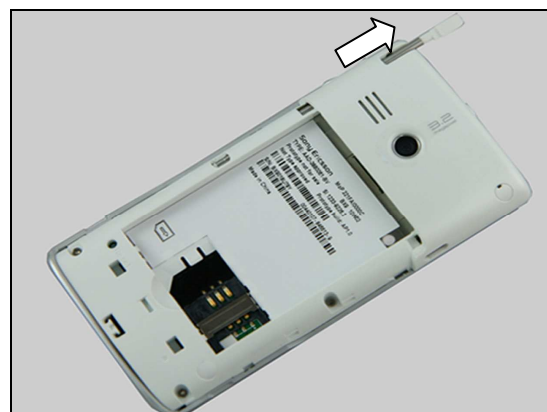


Remove the Battery.



3.3 Stylus

1. Push the Stylus to release it.
2. Remove the Stylus.



3.4 Front Cover Assy

Remove screw cover by using Dentist hook.



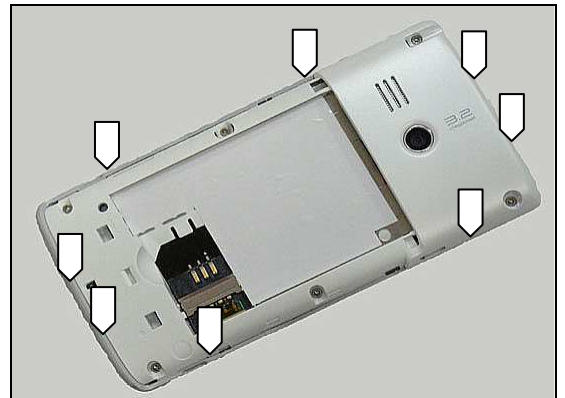


Disassembly

Remove these six screws M1.6*4mm by using a screwdriver with T5 bits.



There are eight hooks.



Insert the Guitar Pick as shown in picture.

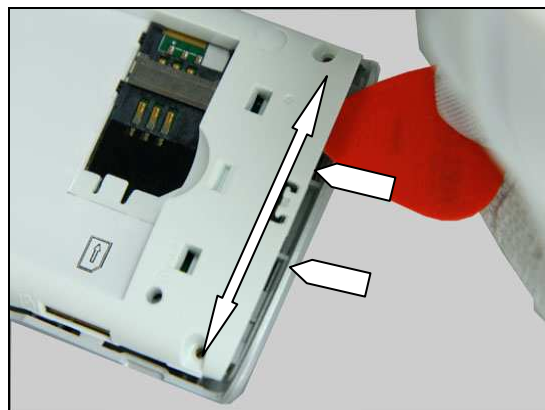


Gently slide back and forth to release two hooks from this side of the Front Cover Assy.

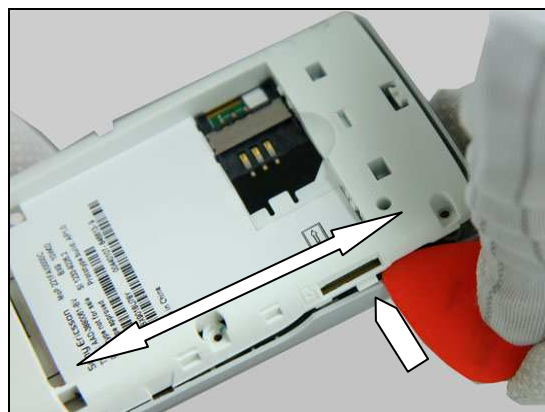


Disassembly

Do the same to release two hooks on the lower side.



Do the same to release two hooks on the opposite side.



Raise the Front Cover Assy by lifting straight up.



Remove the Front Cover Assy.





Disassembly

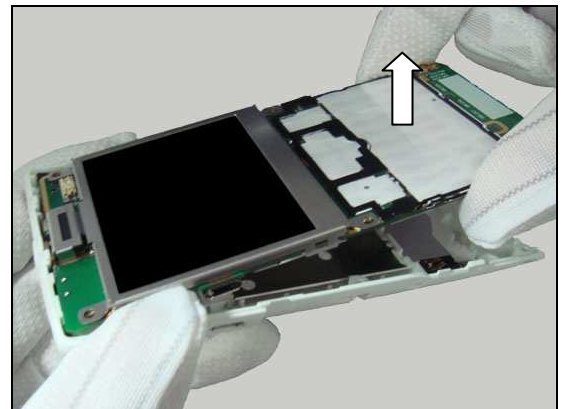
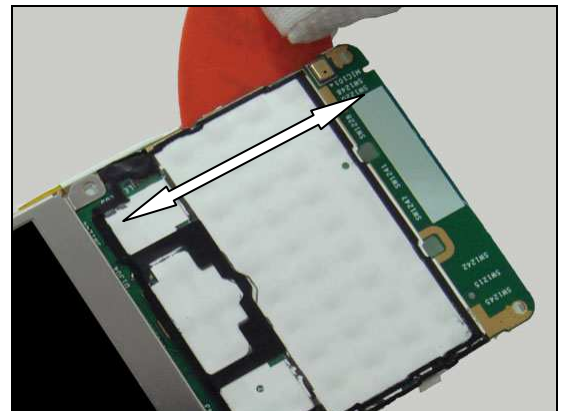
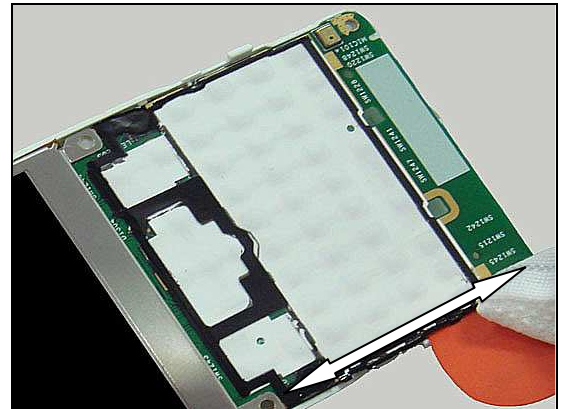
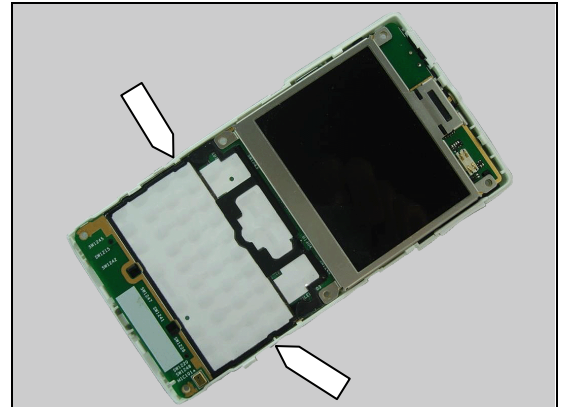
3.5 Rear Cover

There are two hooks to hold PCBA.

Insert the Guitar Pick into the left side of the Rear Cover as shown.

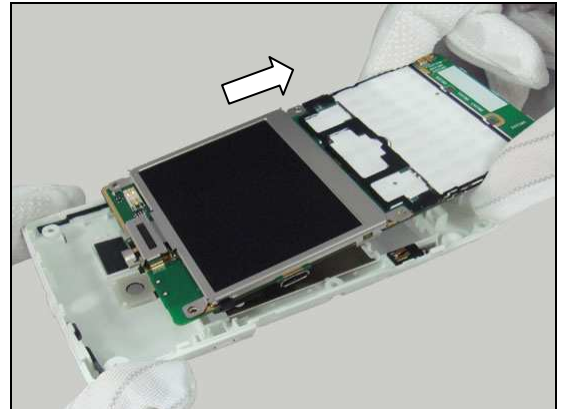
Do the same on the opposite side.

Raise the bottom of the Main PCBA approximately 30° at the bottom.

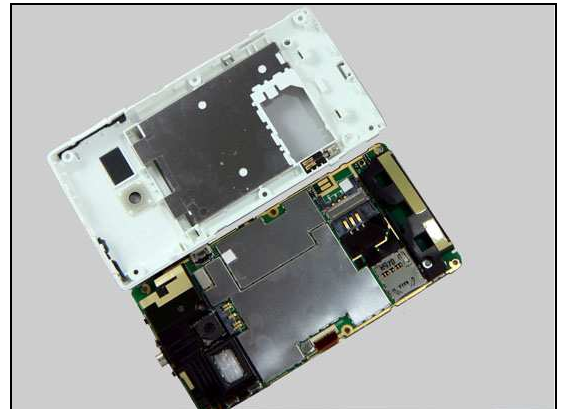


Disassembly

Push the PCBA to the right hand side.

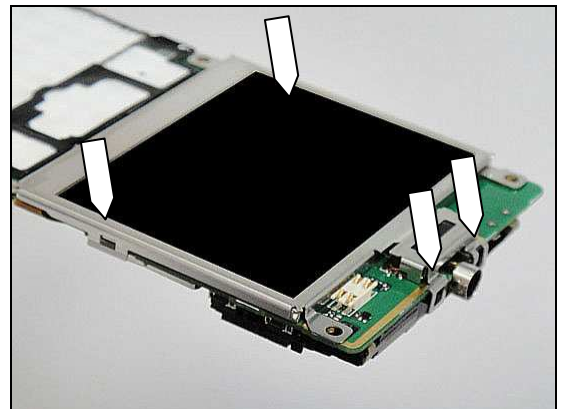


Remove the rear cover.

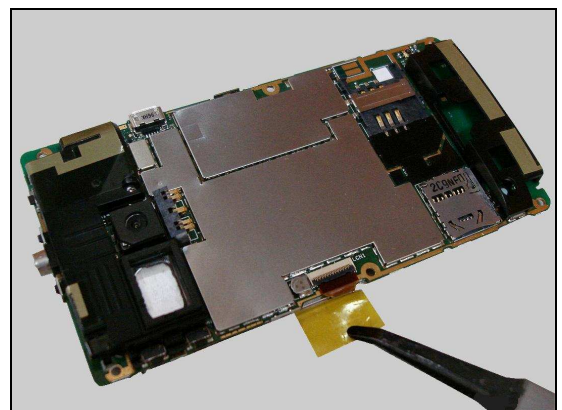


3.6 LCM

The LCM is secured to the Main PCBA by four hooks.

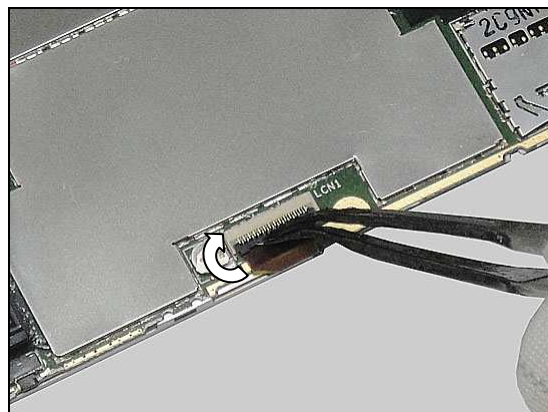


Use the Flex Film Assembly Tool to tear down the ZIF connector kapton.

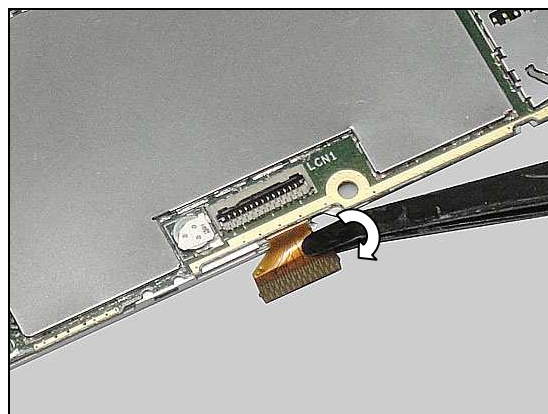


Disassembly

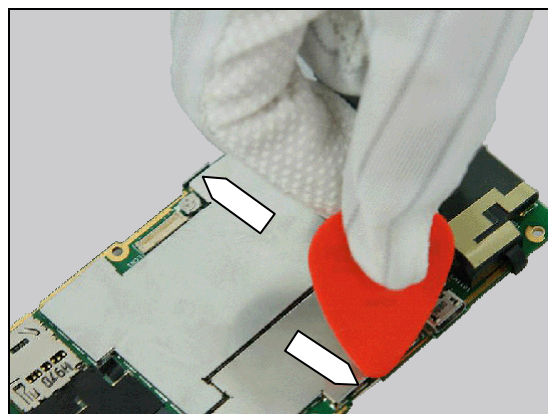
Open the FPC socket by using Flex Film Assembly Tool.



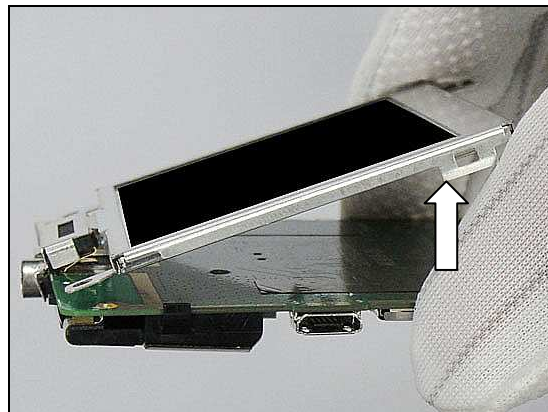
Use Flex Film Assembly Tool to disconnect the FPC.



Use Guitar Pick to release two LCM shielding hooks.

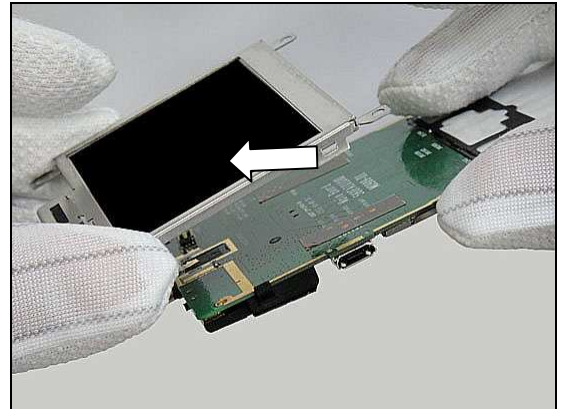


Raise the bottom of the LCM approximately 30° at the bottom.



Disassembly

Push the LCM to the left hand side.

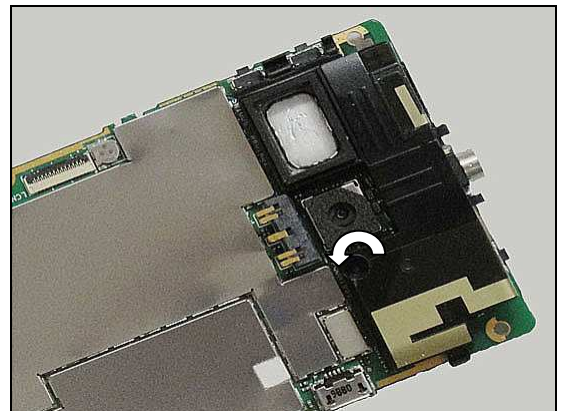


Remove the LCM.

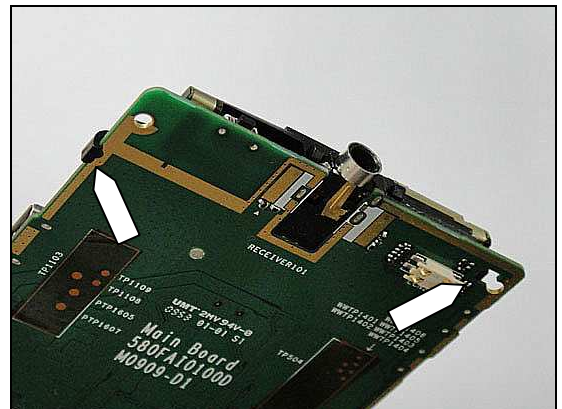


3.7 Speaker Box Assy

Remove the Screw M1.4*3mm by using screwdriver with T5 bits.

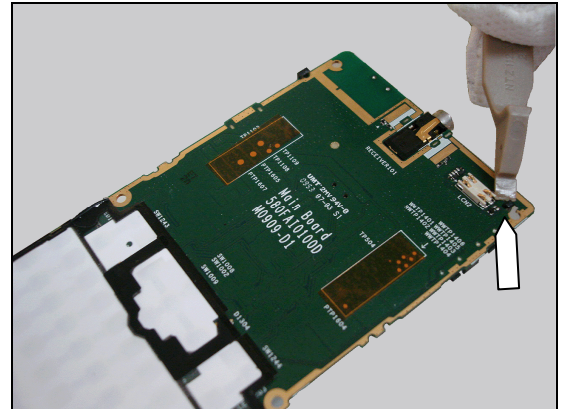


There are two snap hooks securing the Speaker Box Assy.

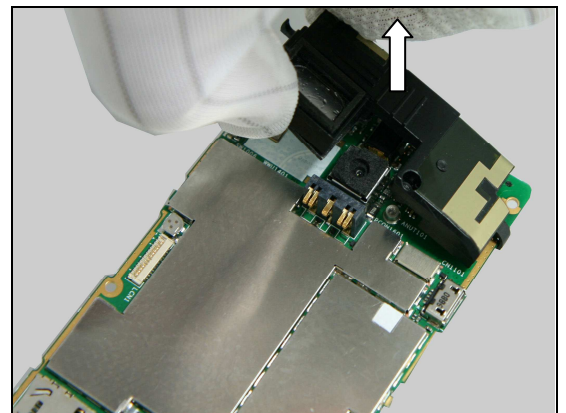


Disassembly

Use Front Opening Tool to release the hook.



Release the Speaker Box Assy from the left hook to right hook.

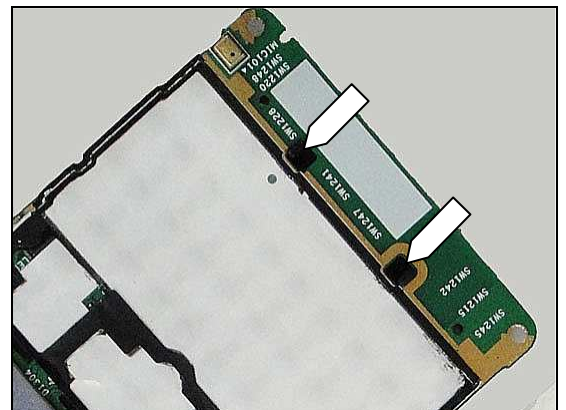


Remove the Speaker Box Assy.



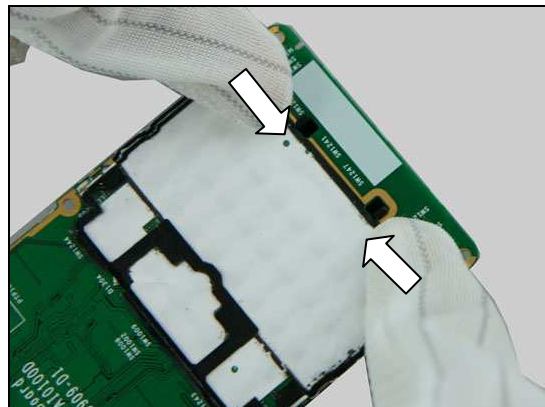
3.8 Phone Antenna

There are two hooks securing the Phone Antenna.

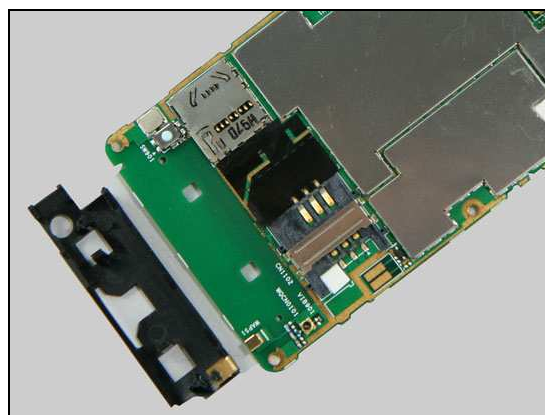


Disassembly

Push two hooks both sides to release the Phone Antenna.



Remove the Phone Antenna.



4 Replacement

4.1 Battery Cover

Follow the 3.1 Disassembly instructions!

Prepare the new Battery Cover.

Follow the 5.8 Reassembly instructions!



4.2 Stylus

Follow the 3.1 – 3.3 Disassembly instructions!

Prepare the new Stylus.

Follow the 5.6- 5.8 Reassembly instructions!

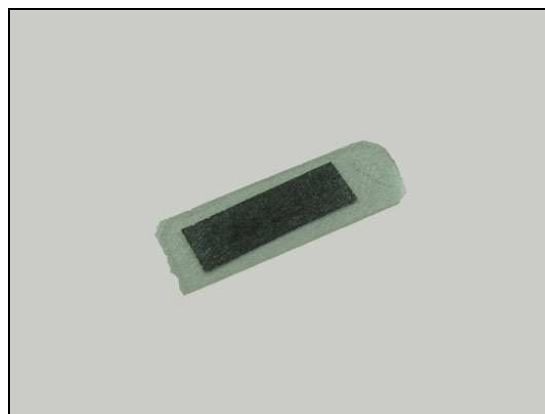


4.3 Mic Mesh

Follow the 3.1 – 3.4 Disassembly instructions!

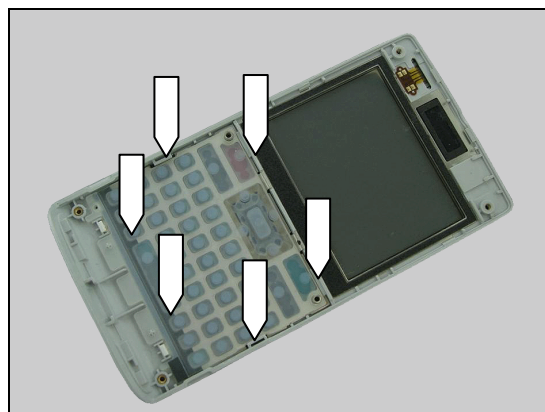
Carry out the installation as described below.

Follow the 5.5 – 5.8 Reassembly instructions!



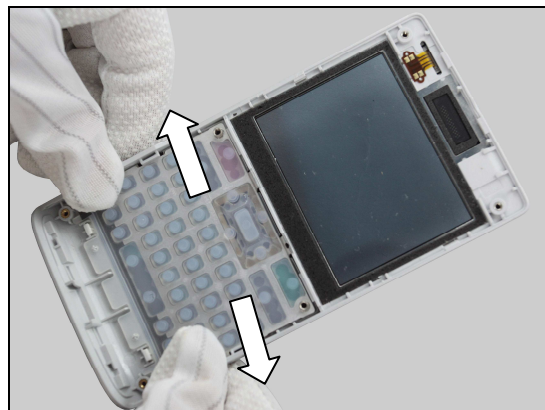
REMOVAL

There are six hooks securing the keyboard.



Replacement

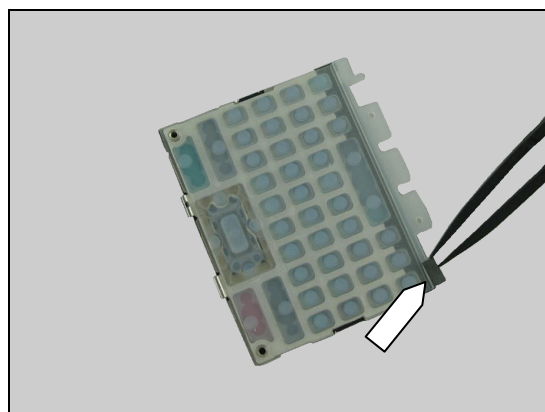
Pull the front cover both sides.



Release the Keyboard.

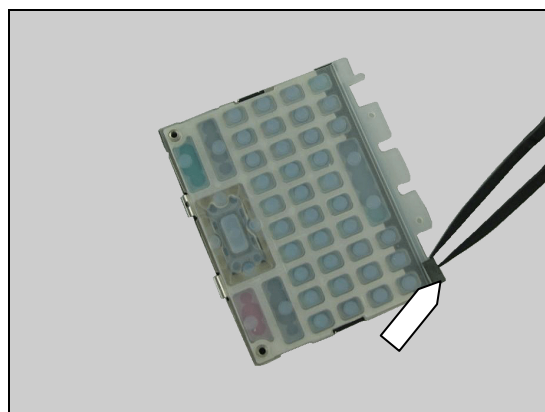


Use the tweezer to remove the Mic Mesh from the cover.



INSTALLATION

Attached the Mic Mesh and do not exceed the Keyboard.

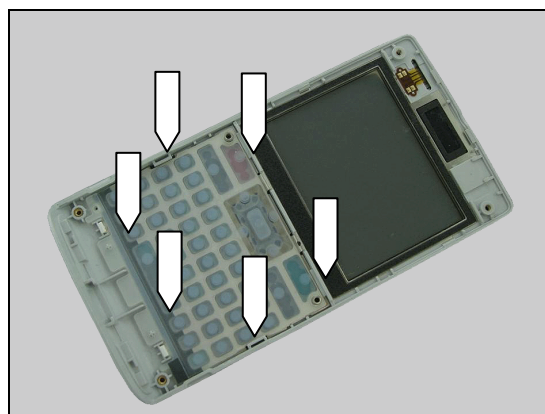


Replacement

Set the Keyboard.



Press the Keyboard in six hooks.



4.4 Keyboard

Follow the 3.1- 3.4 Disassembly instructions!

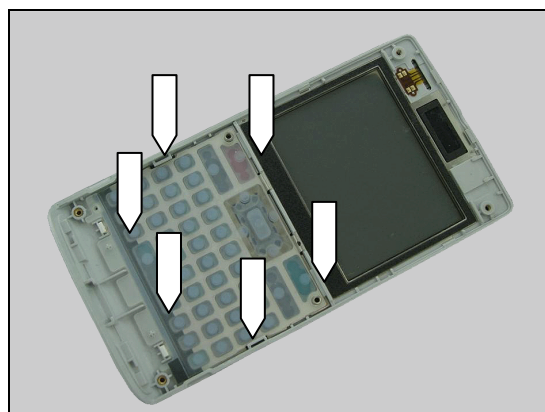
Carry out the replacement as described below.

Follow the 5.5 – 5.8 Reassembly instructions!



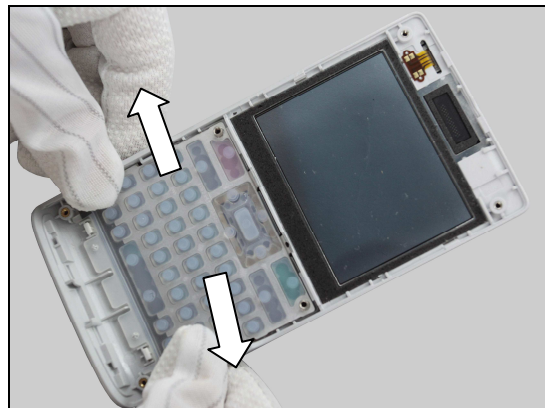
REMOVAL

There are six hooks securing the keyboard.



Replacement

Pull the front cover both sides.



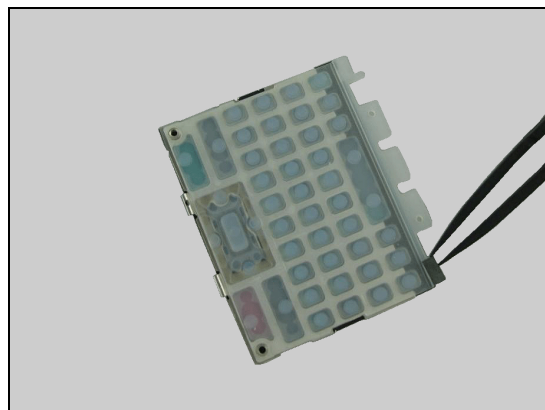
Release the Keyboard.



Remove the Keyboard.



Use the tweezer to remove the Mic Mesh from the Keyboard



Replacement

INSTALLATION

Attached the Mic Mesh and do not exceed the Keyboard.

Set the Keyboard.

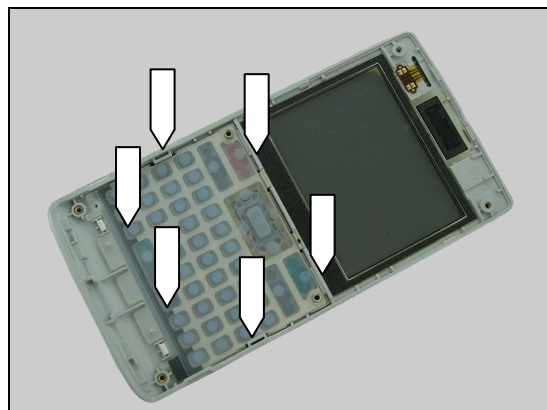
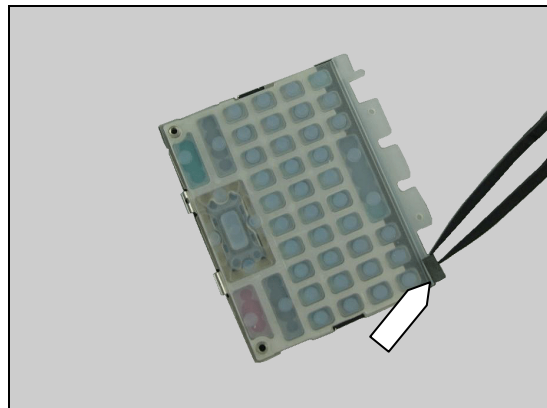
Press the Keyboard in six hooks.

4.5 Co-Brand

Follow the 3.1 – 3.4 Disassembly instructions!

Carry out the installation as described below.

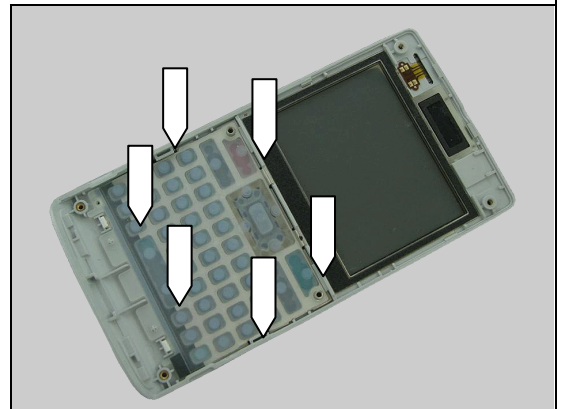
Follow the 5.5 – 5.8 Reassembly instruction



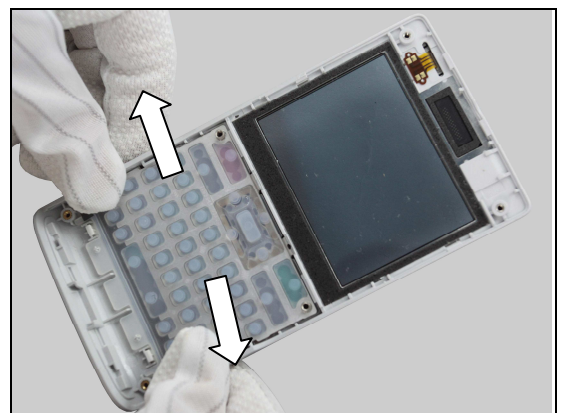
Replacement

REMOVAL

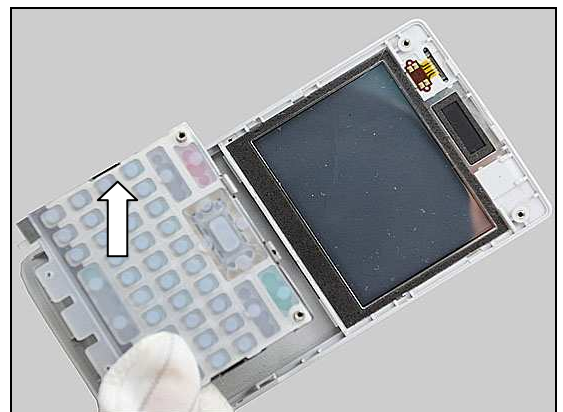
There are six hooks securing the keyboard.



Pull the front cover both sides.



Release the Keyboard.

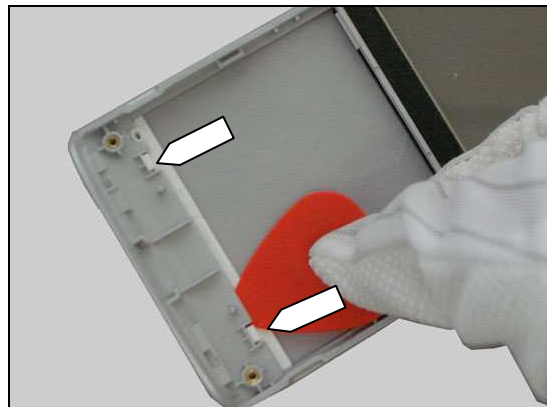


Remove the Keyboard.

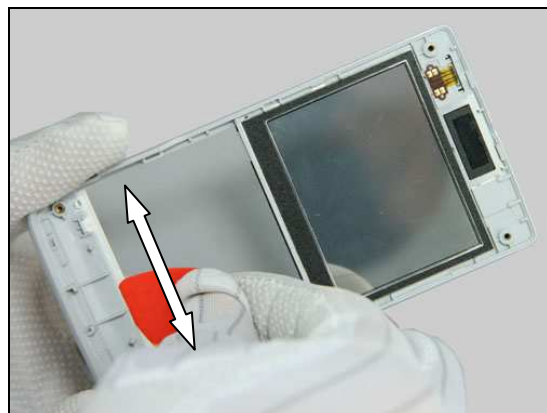


Replacement

Use Guitar Pick to release the two hooks.



Use Guitar Pick to slide the adhesive between Co-Brand and Front Cover, then make them gently separated.



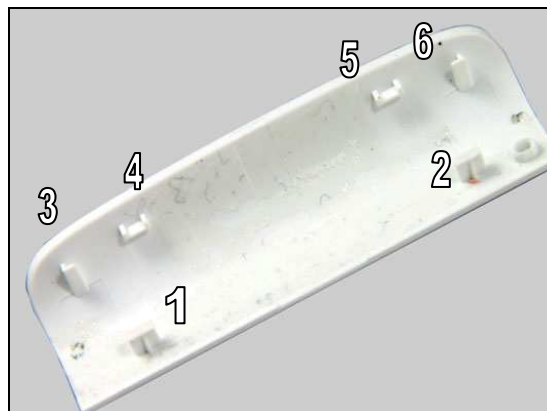
Remove the Co-Brand.

SCRAP!NOT TO BE REUSED!



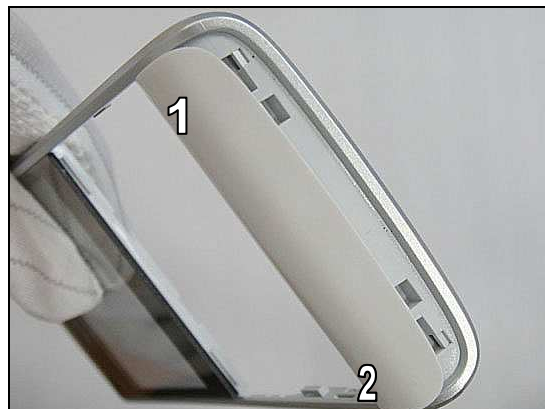
INSTALLATION

There are six hooks on the bottom side.

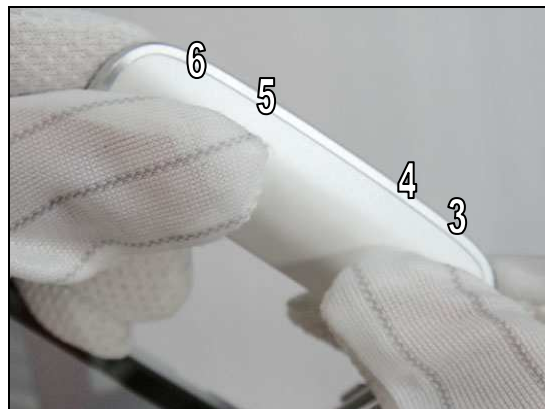


Replacement

Clean the adhesive on the Front Cover Assy. Insert 1,2 hooks first.



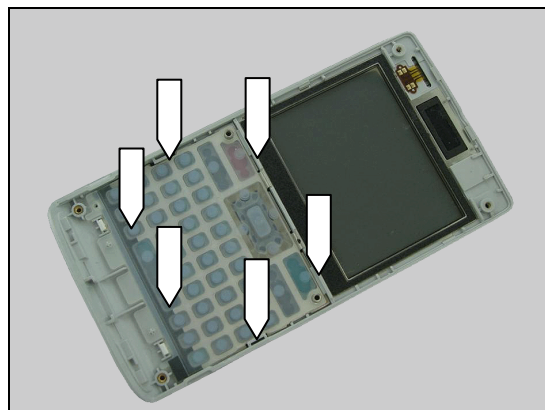
Use fingers to press the Co-Brand to insert 3,4 ,5,6 hooks.



Set the Keyboard.



Press the Keyboard in six hooks.





Replacement

4.6 Front Cover Assy

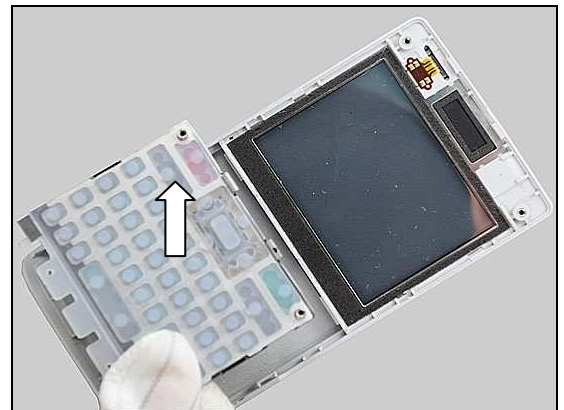
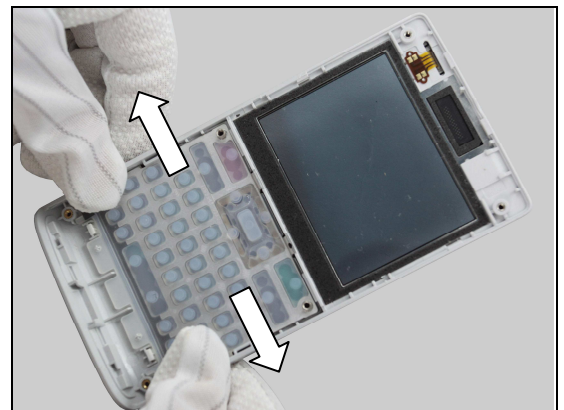
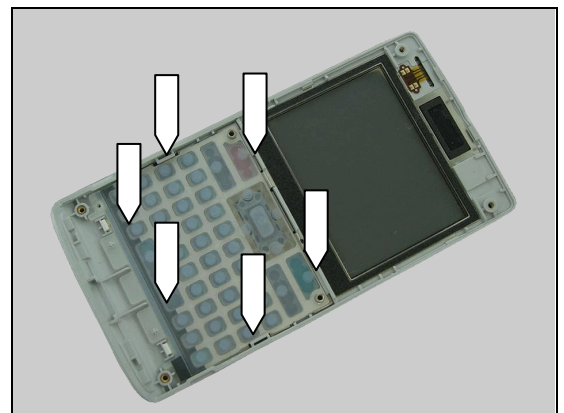
Follow the 3.1- 3.4 Disassembly instructions!
Carry out the replacement as described below.
Follow the 5.5 – 5.8 Reassembly instructions!

REMOVAL

There are six hooks securing the keyboard.

Pull the front cover both sides.

Release the Keyboard.

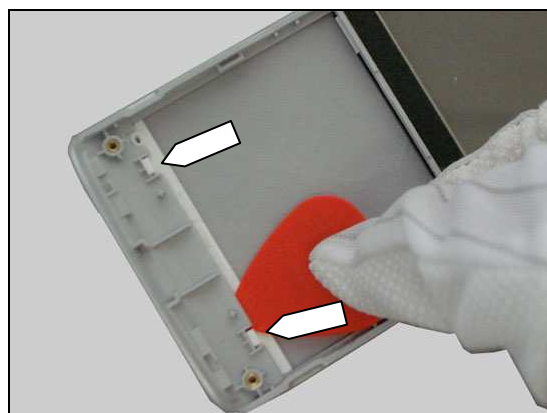


Replacement

Remove the Keyboard.



Use Guitar Pick to release these two hooks.



Use Guitar Pick to slide the adhesive between Co-Brand and Front Cover, then make them gently separated.



Remove the Co-Brand.



Replacement

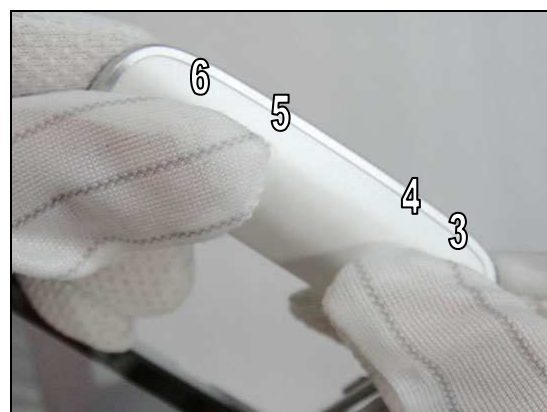
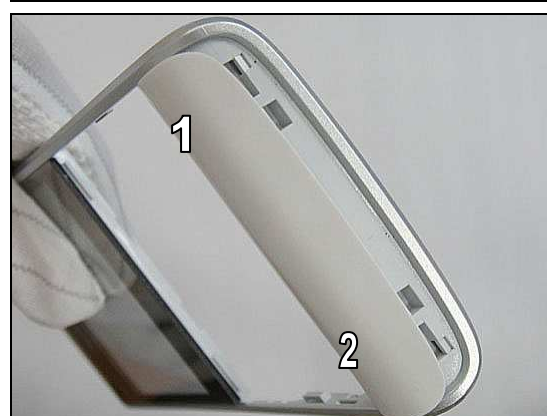
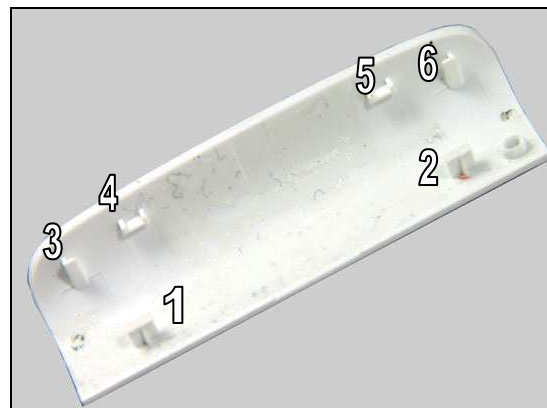
INSTALLATION

There are six hooks on the bottom side.

Insert 1,2 hooks first.

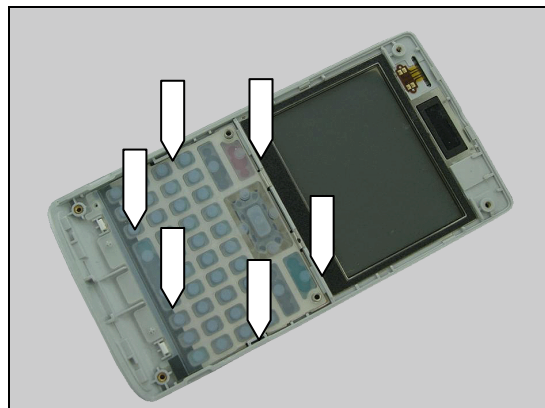
Use fingers to press the Co-Brand to insert 3,4,5,6 hooks.

Set the Keyboard.



Replacement

Press the Keyboard in six hooks.

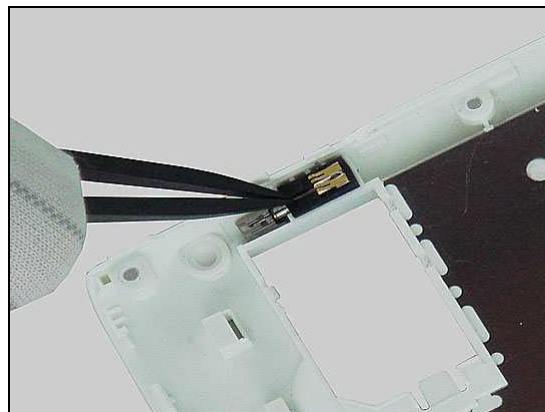


4.7 Vibrator

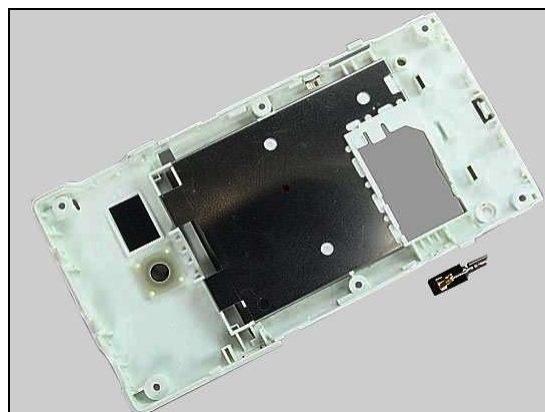
Follow the 3.1 – 3.5 Disassembly instructions!
 Carry out the replacement as described below.
Follow the 5.4 – 5.8 Reassembly instructions!

REMOVAL

Use the tweezer to pick up the Vibrator.



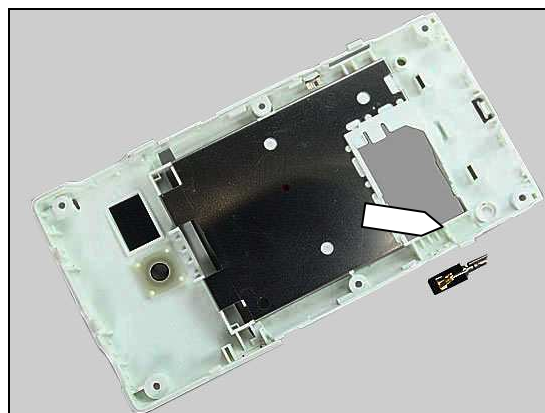
Remove the Vibrator



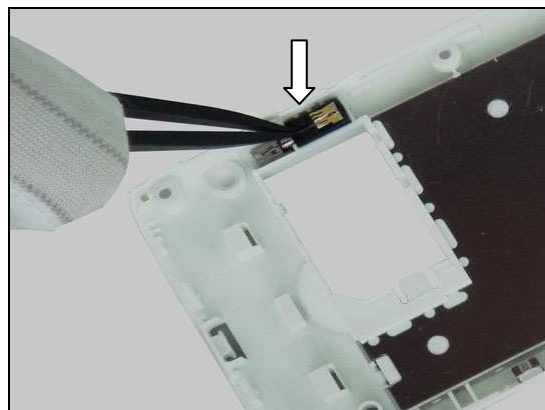
Replacement

INSTALLATION

Set the Vibrator into the holder on rear housing.



Press down with the tweezer and do not damage the pin of Vibrator.



4.8 Power Key

Follow the 3.1 – 3.5 Disassembly instructions!
Carry out the replacement as described below.
Follow the 5.4 – 5.8 Reassembly instructions!



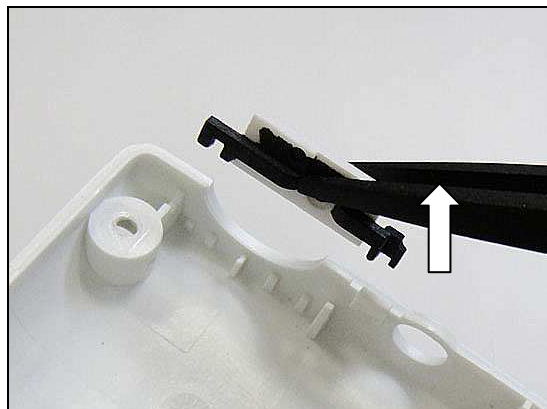
REMOVAL

Use the tweezer to pick up the Power Key.



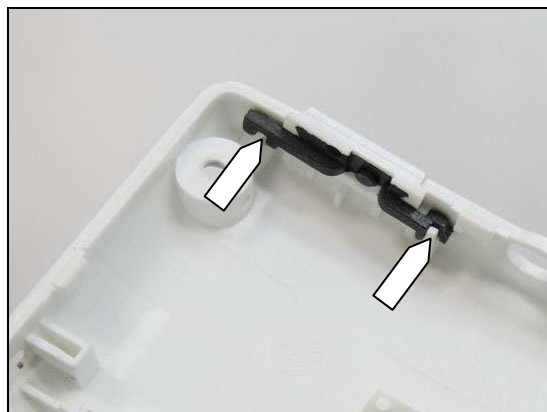
Replacement

Remove the Power Key.

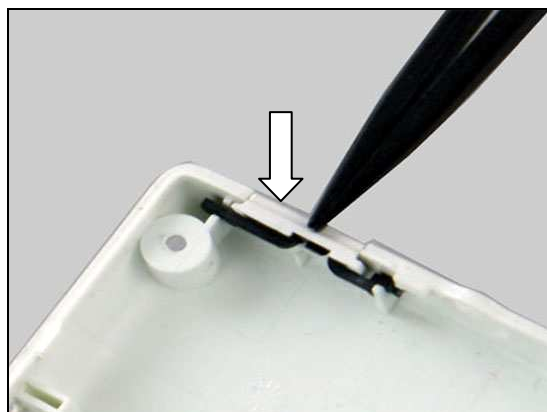


INSTALLATION

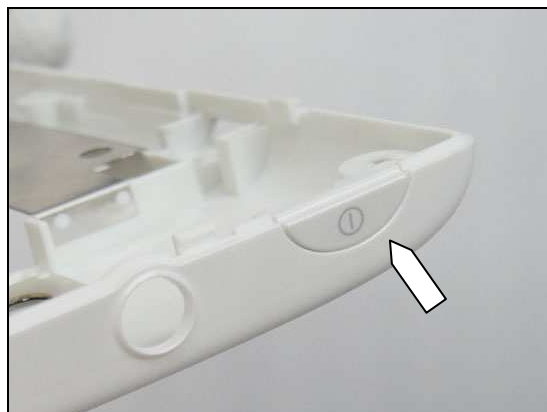
Set the Power Key into two holders on rear housing.



Press down with tweezers.



The orientation shown in this picture.



Replacement

4.9 Volume Key

Follow the 3.1 – 3.5 Disassembly instructions!
Carry out the replacement as described below.
Follow the 5.4 – 5.8 Reassembly instructions!

c

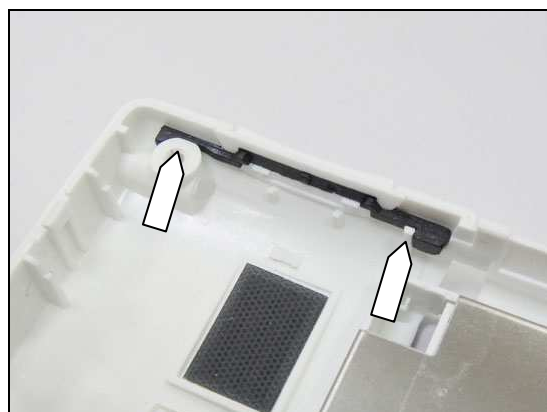
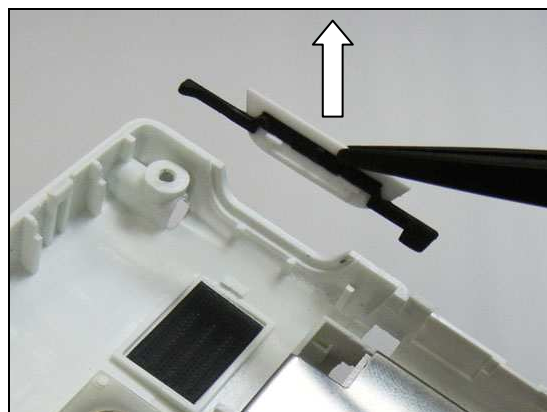
REMOVAL

Use the tweezer to pick up the Volume Key.

Remove the Volume Key.

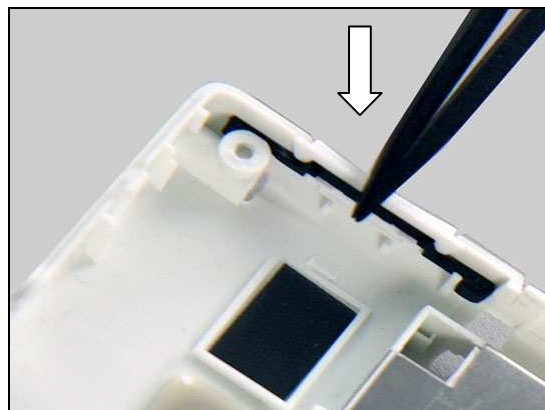
INSTALLATION

Set the Volume Key into two holders on rear housing.

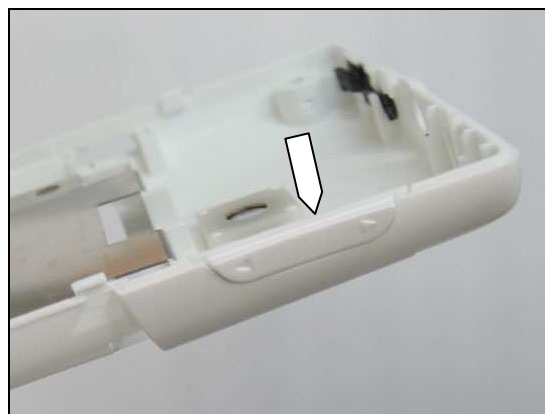


Replacement

Press down with tweezers.



The orientation shown in this picture.



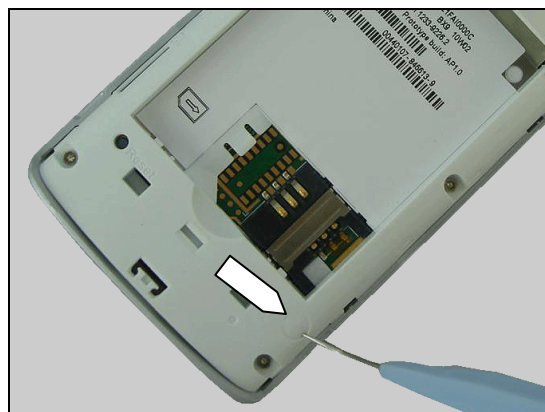
4.10 RF Rubber

Follow the 3.1 – 3.2 Disassembly instructions!
Carry out the replacement as described below.
Follow the 5.7 – 5.8 Reassembly instructions!



REMOVAL

- Turn to the back side of rear cover.
- Use the Dentist hook to release the RF Rubber.



Replacement

Remove the RF Rubber.



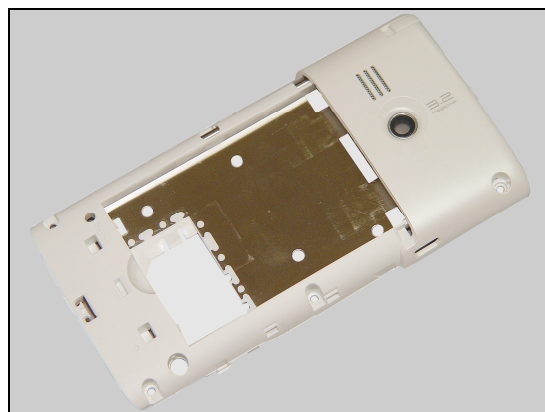
INSTALLATION

Place the RF Rubber into the hole on rear cover.



4.11 Rear Cover

Follow the 3.1- 3.5 Disassembly instructions!
Carry out the replacement as described below.
Follow the 5.4 – 5.8 Reassembly instructions!



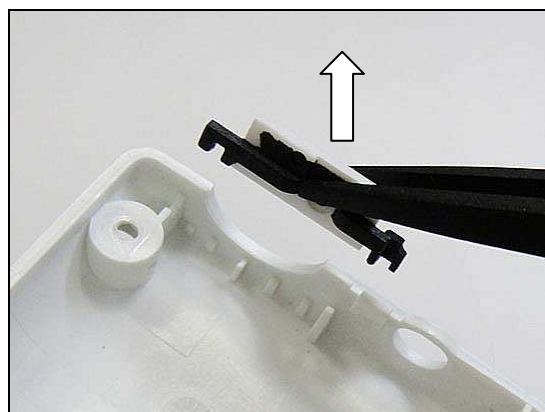
REMOVAL

Use the tweezer to pick up the Power Key.



Replacement

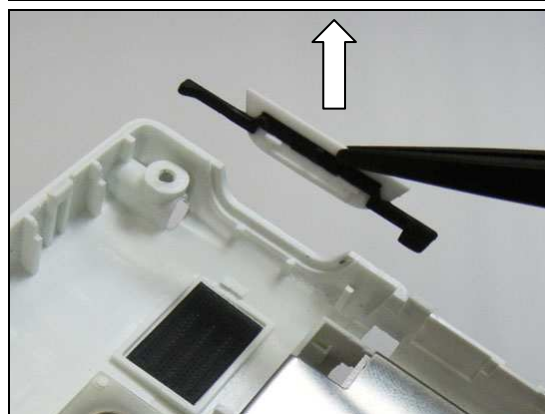
Remove the Power Key.



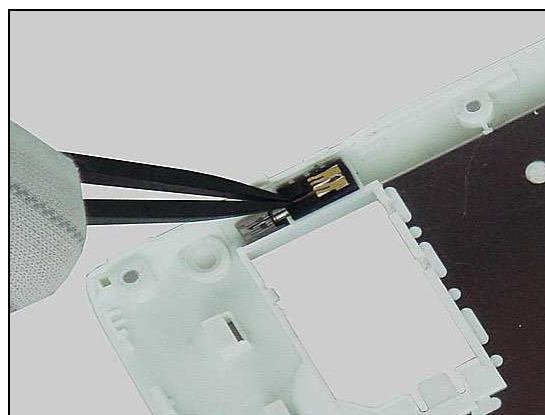
Use the tweezer to pick up the Volume Key.



Remove the Volume Key.

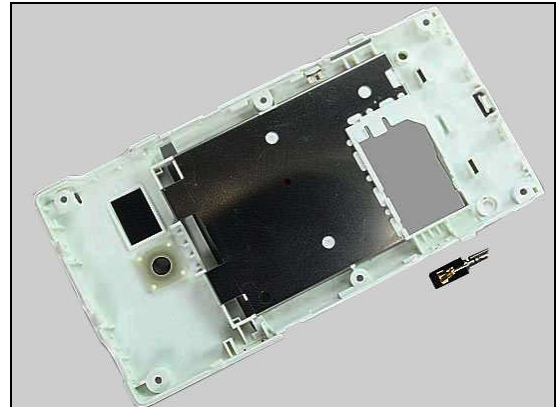


Use the tweezer to pick up the Vibrator.



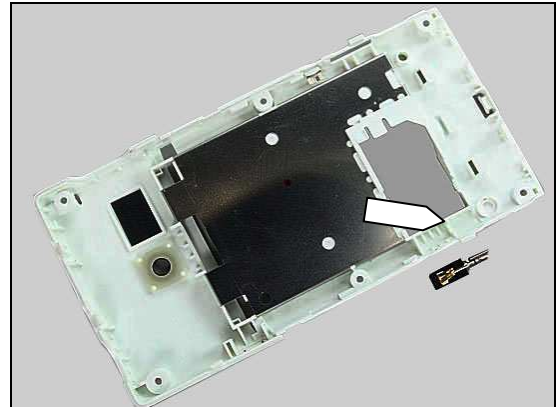
Replacement

Remove the vibrator.

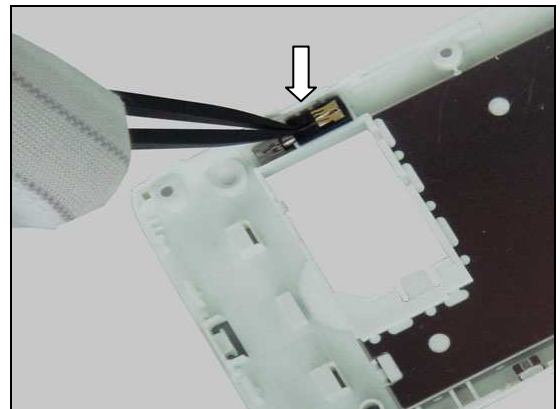


INSTALLATION

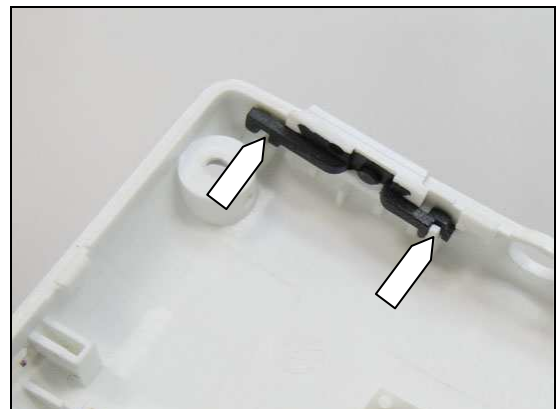
Set the Vibrator into the holder on rear housing.



Press down with the tweezer and do not damage the pin of Vibrator.

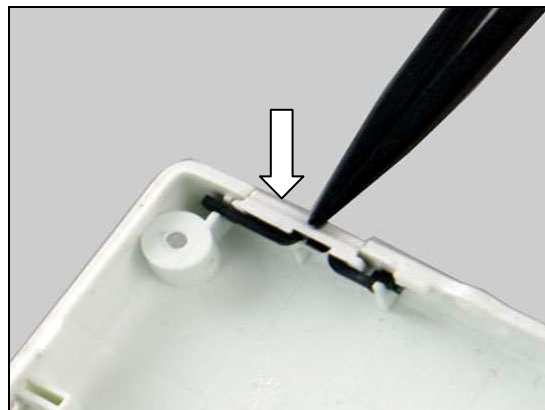


Set the Power Key into two holders on rear housing.

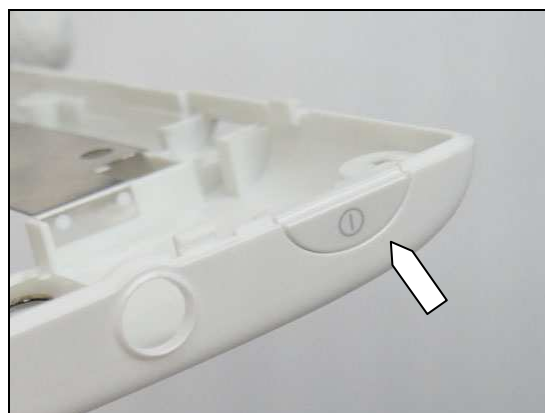


Replacement

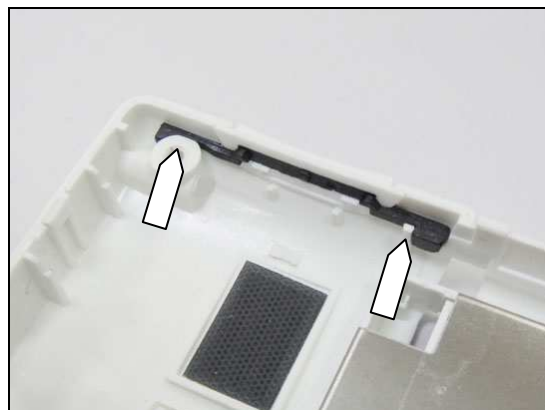
Press down with tweezers.



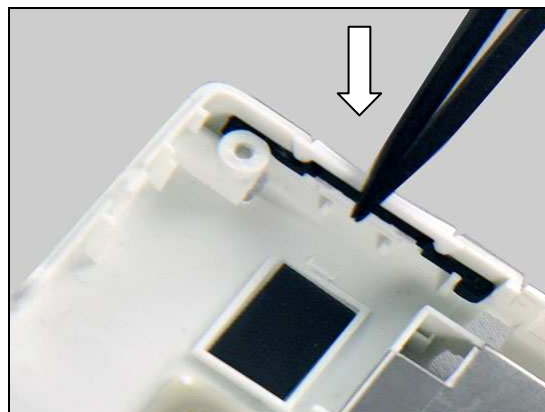
The orientation shown in this picture.



Set the Volume Key into two holders on rear housing.

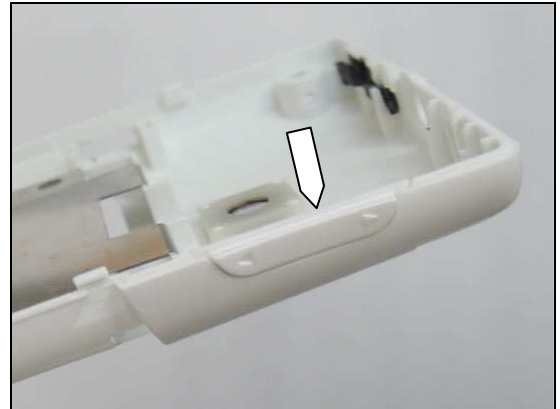


Press down with the flat end of the tweezer.



Replacement

The orientation shown in this picture.

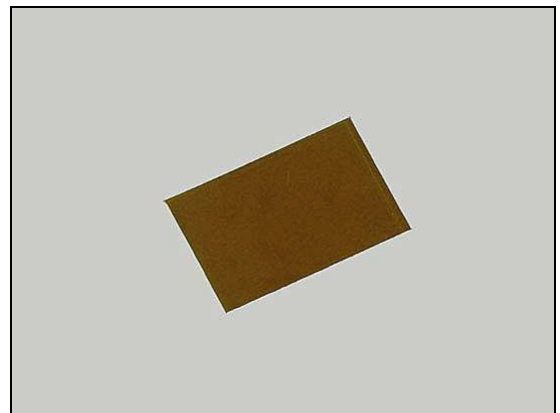


4.12 ZIF Connector Kapton

Follow the 3.1 – 3.5 Disassembly instructions!

Carry out the replacement as described below.

Follow the 5.4 – 5.8 Reassembly instructions!

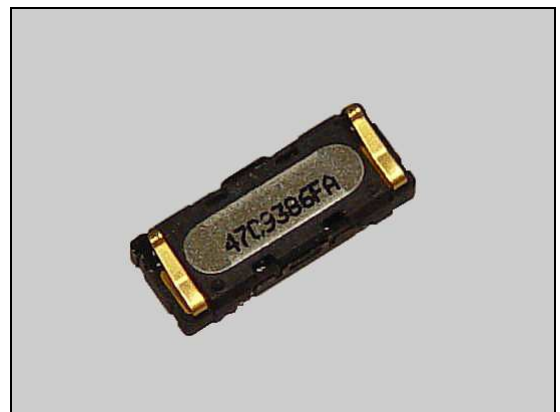


4.13 Receiver

Follow the 3.1 – 3.6 Disassembly instructions!

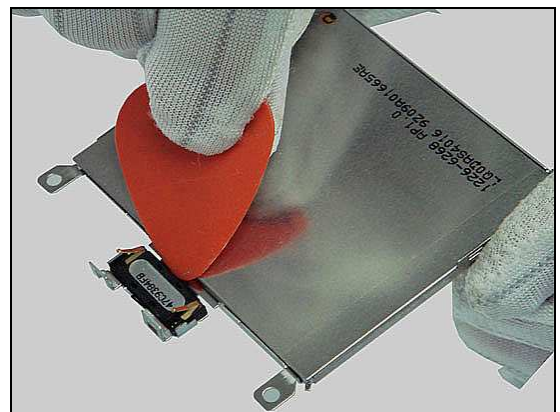
Carry out the replacement as described below.

Follow the 5.3 – 5.8 Reassembly instructions!



REMOVAL

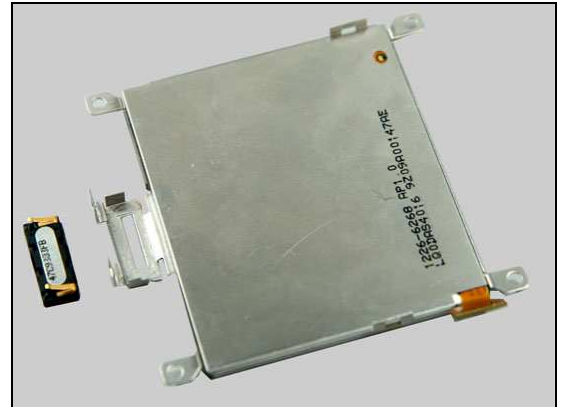
Use the Guitar Pick to remove the Receiver from the LCM.





Replacement

Remove the Receiver.



INSTALLATION

Prepare a new receiver and place into LCM.

Please pay attention on the direction of the pin on receiver.

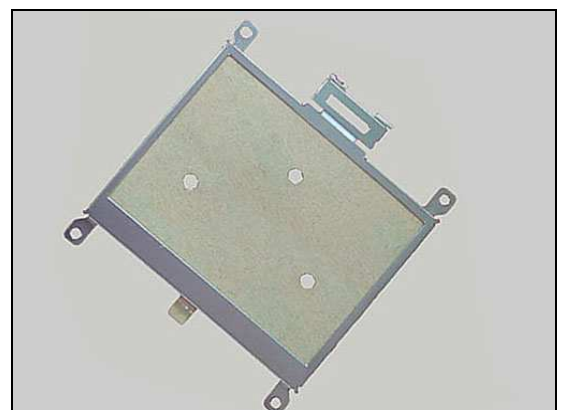
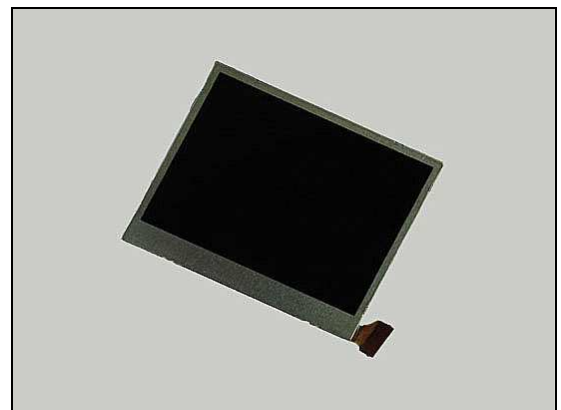


4.14 LCD & LCM Shielding

Follow the 3.1 – 3.6 Disassembly instructions!

Carry out the replacements as described below.

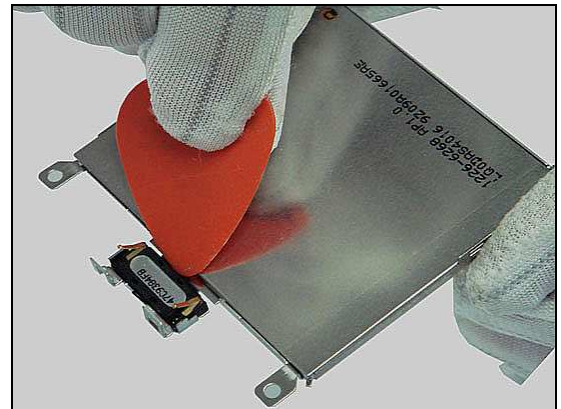
Follow the 5.3 – 5.8 Reassembly instructions!



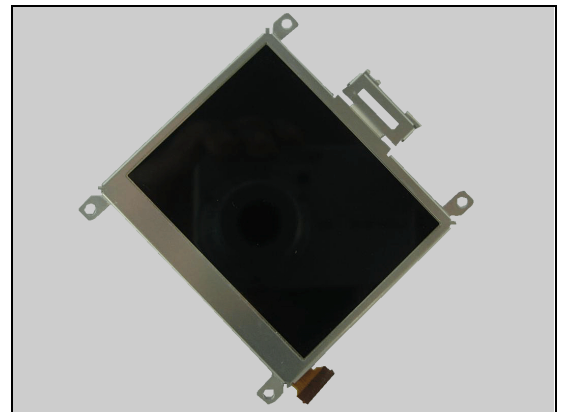
Replacement

REMOVAL

Use the Guitar Pick to remove the Receiver from the LCM.

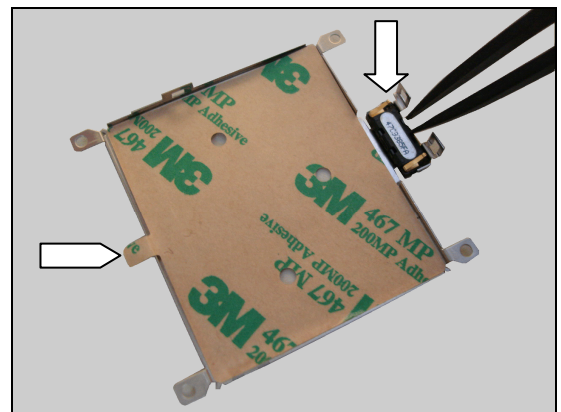


Scrap LCD & LCM Shielding together.



INSTALLATION

- To place the Receiver into the LCM Shielding by tweezer.
- Place Receiver into the LCM shielding and tear down the release paper.

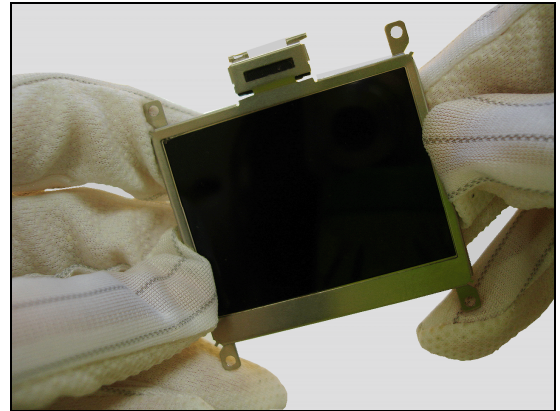


Set the LCD in LCM shielding.



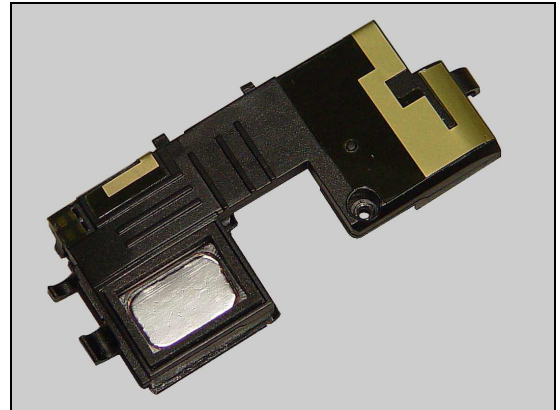
Replacement

Press the frame of LCM Shielding and gently attached with LCD



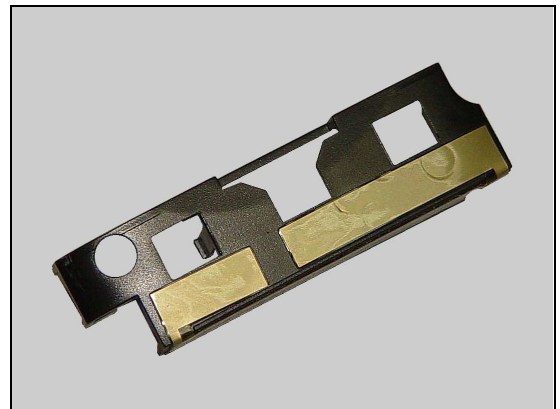
4.15 Speaker Box Assy

Follow the 3.1 – 3.7 Disassembly instructions!
Carry out the replacement as described below.
Follow the 5.2 – 5.8 Reassembly instructions!



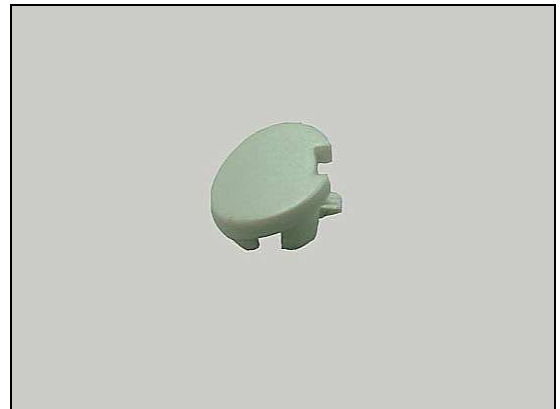
4.16 Phone Antenna

Follow the 3.1 – 3.8 Disassembly instructions!
Carry out the replacement as described below.
Follow the 5.1 – 5.8 Reassembly instructions!



4.17 Screw Cover

Follow the 3.1 – 3.4 Disassembly instructions!
Carry out the replacement as described below.
Follow the 5.5 – 5.8 Reassembly instructions!



Replacement

4.18 Camera Cap

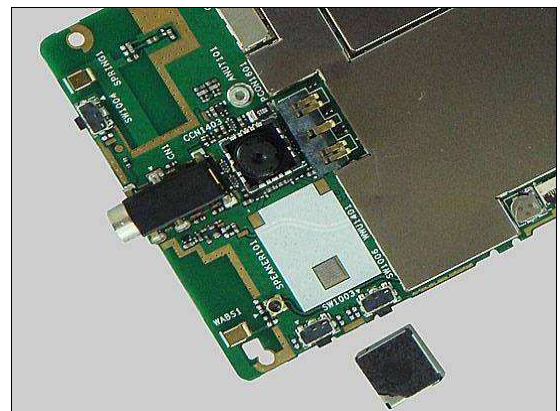
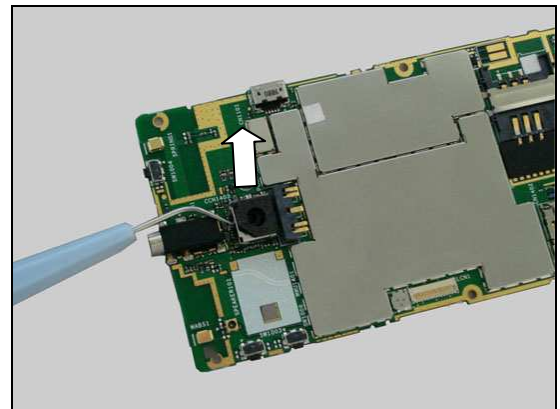
Follow the 3.1 – 3.7 Disassembly instructions!
 Carry out the replacement as described below.
Follow the 5.1 – 5.8 Reassembly instructions!

REMOVAL

Insert the Dentist hook into the corner of the Camera Cap and pull upwards to release it.

Remove the Camera Cap.

Use the tweezer to tear down the Camera Sponge on Camera Cap.



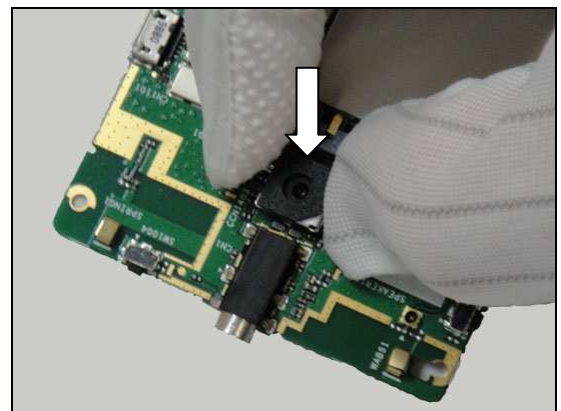
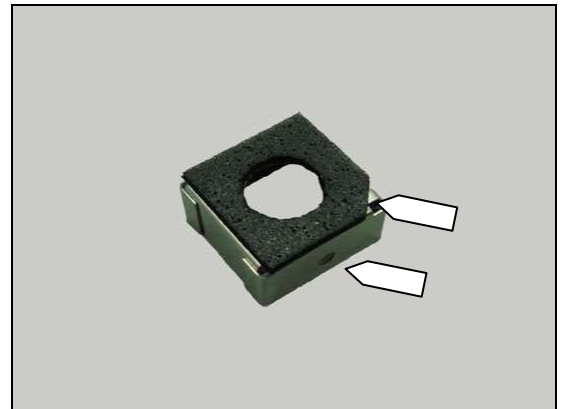
Replacement

INSTALLATION

- Use tweezer to clip a new Camera Sponge to attach on Camera Cap.
- The bevel of Camera Sponge is shown as picture.
- Please pay attention on the direction of Camera & Camera Sponge.

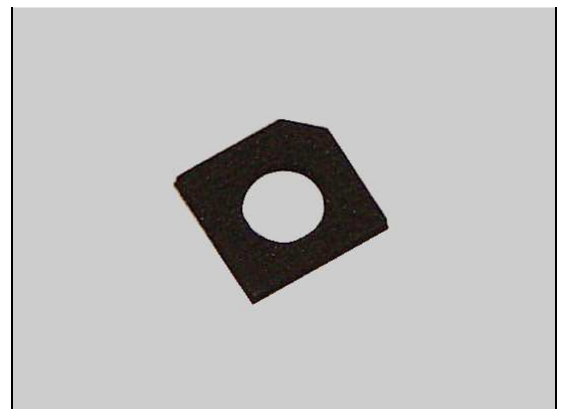
Use tweezer to clip the Camera Cap,
The hole of Camera Cap toward Audio Jack.

Place the Camera Cap on Camera Socket and press
gently until it is securely attached.



4.19 Camera Sponge

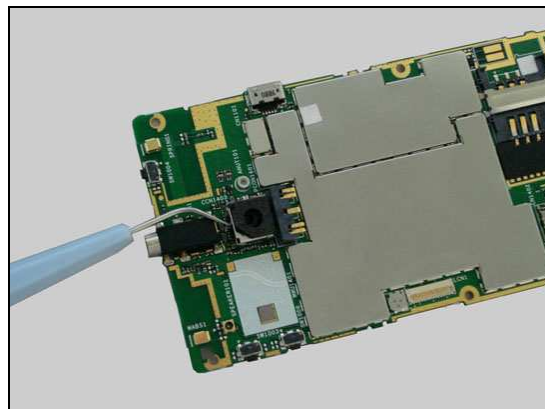
Follow the 3.1 – 3.7 Disassembly instructions!
Carry out the replacement as described below.
Follow the 5.2 – 5.8 Reassembly instructions!



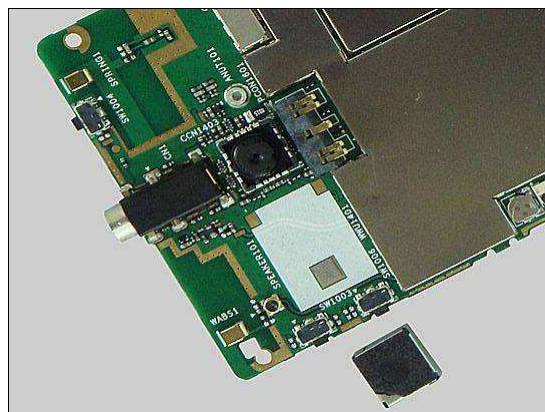
Replacement

REMOVAL

Insert the Dentist hook into the corner of the Camera Cap and pull upwards to release it.



Remove the Camera Cap.

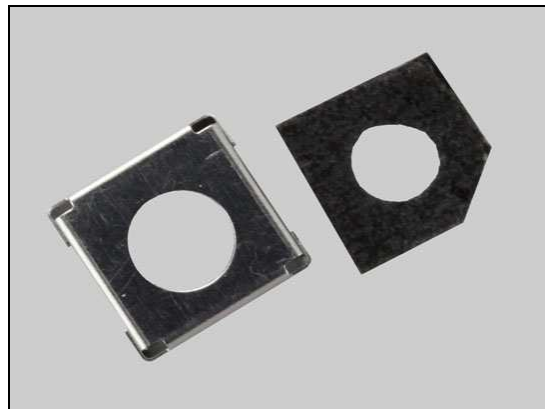


Use the tweezer to tear down the Camera Sponge on Camera Cap.



Remove the Camera Sponge.

Scrap!Not to be reused!



Replacement

INSTALLATION

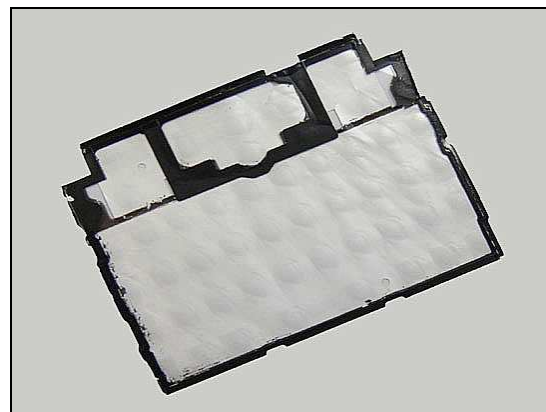
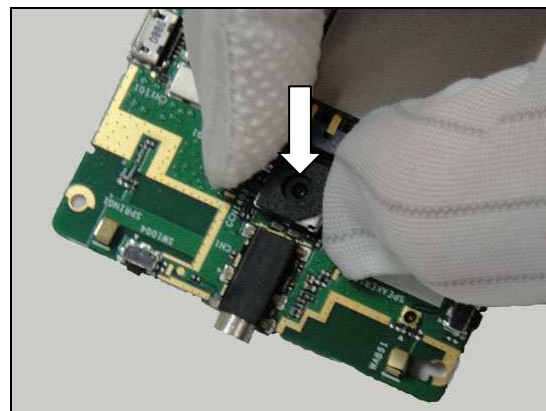
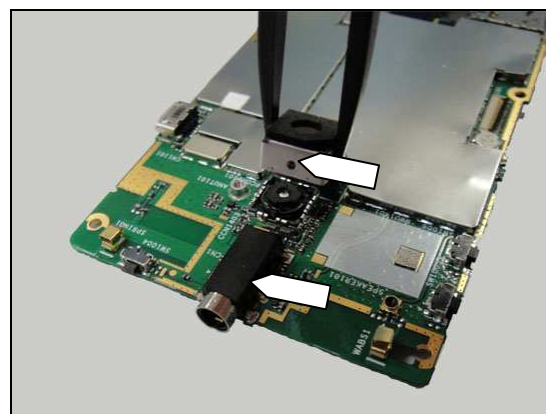
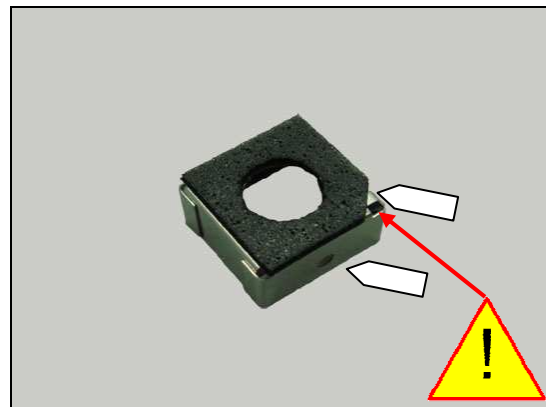
- Use tweezer to clip a new Camera Sponge to attach on Camera Cap.
- The bevel of Camera Sponge is shown as picture.

Use tweezer to clip the Camera Cap,
The hole of Camera Cap toward Audio Jack.

Place the Camera Cap on Camera Socket and press
gently until it is securely attached.

4.20 Dome Sheet

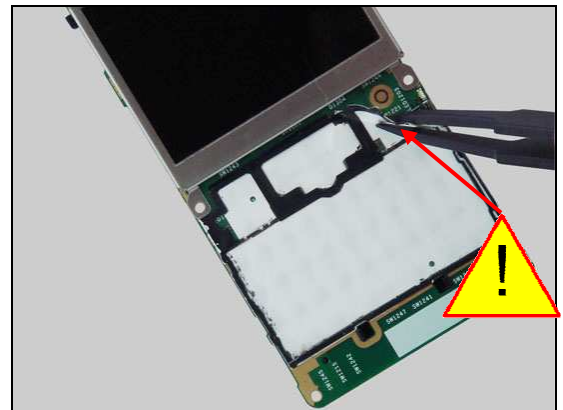
Follow the 3.1 – 3.5 Disassembly instructions!
Carry out the replacement as described below.
Follow the 5.4 – 5.8 Reassembly instructions!



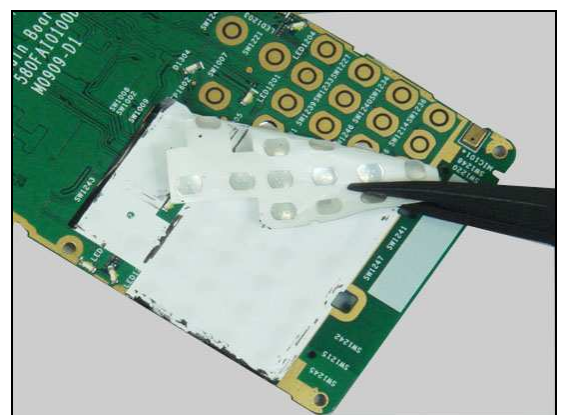
Replacement

REMOVAL

Tear the dome sheet from this corner with tweezer.

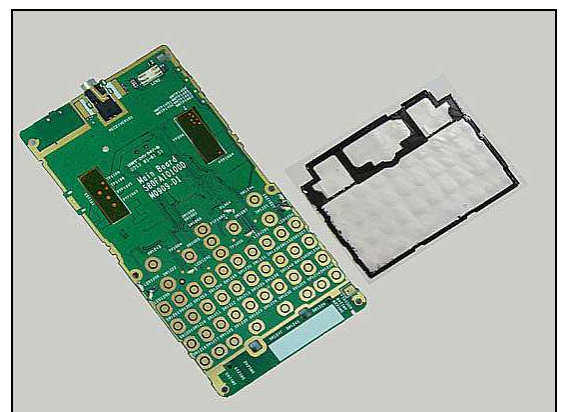


Use the tweezer carefully to tear down the Dome Sheet from the PCBA



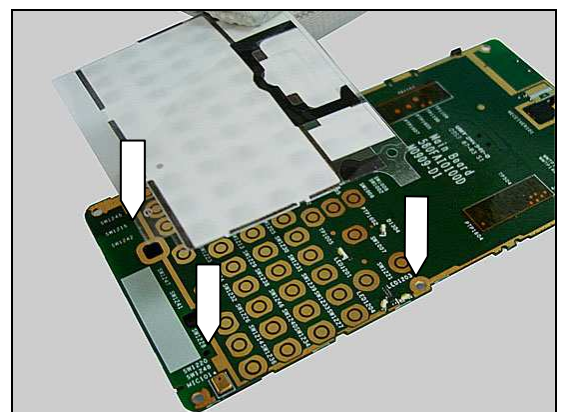
Remove the Dome Sheet.

Scrap! Not to be reused!



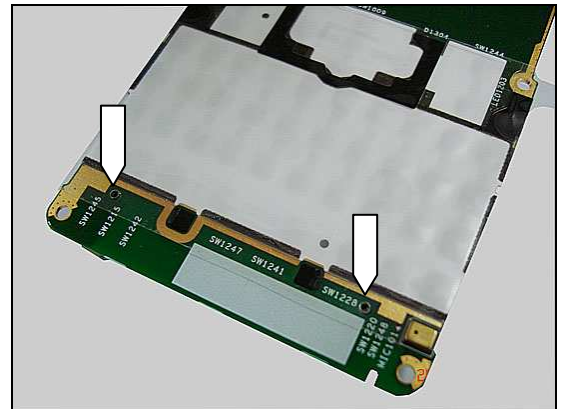
INSTALLATION

The Dome Sheet needs to be installed by aligning with these 3 holes.

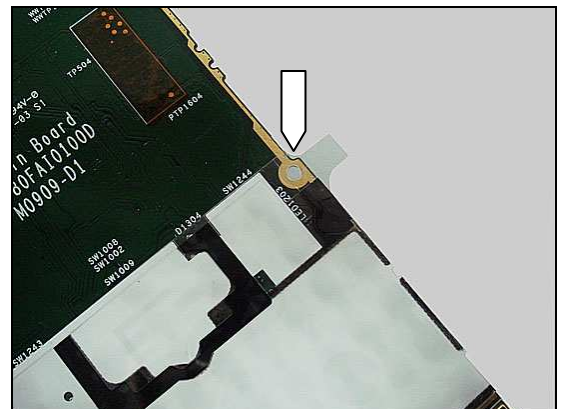


Replacement

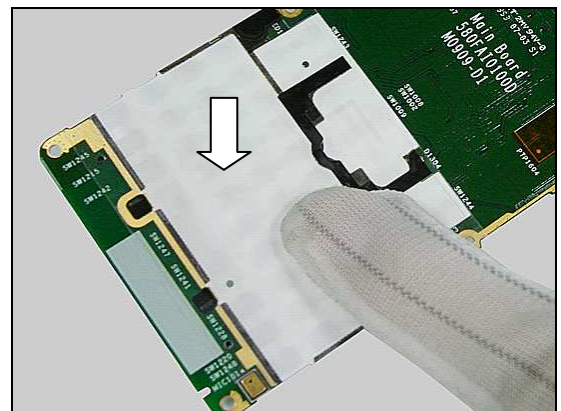
To attach the Dome Sheet by aligning the edge of the holes.



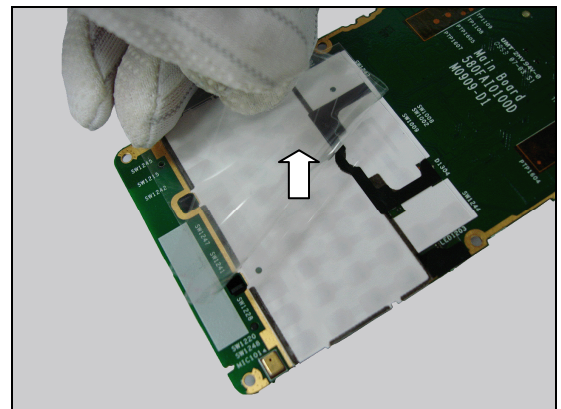
To attach the Dome Sheet by aligning the edge of the hole.



Press Dome Sheet by fingers.



To tear off the sheet.



Replacement

Dome Sheet had been placed.

4.21 Speaker Gasket

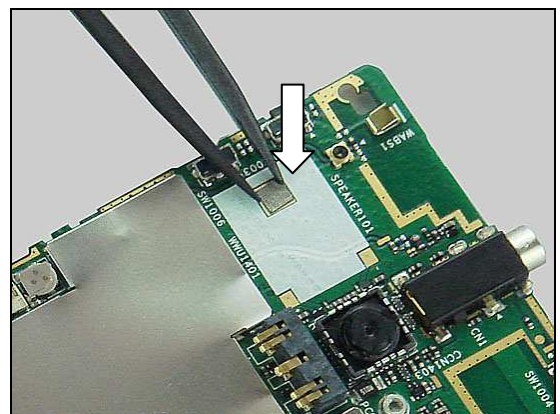
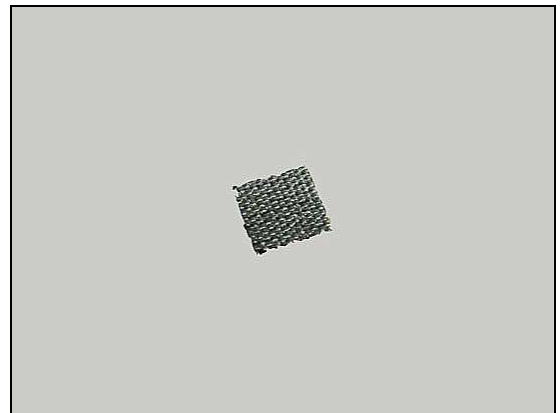
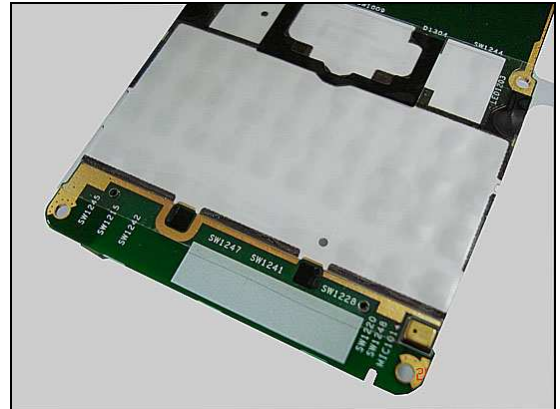
Follow the 3.1 – 3.7 Disassembly instructions!
Carry out the replacement as described below.
Follow the 5.1-5.8 Reassembly instructions!

REMOVAL

Use the Front Opening Tool to tear down Speaker Gasket.

INSTALLATION

Use the tweezers to clip the Speaker Gasket to attached on PCBA.



Replacement

4.22 Water Indicator

INSPECTION

To check whether the Water Indication has been activated (reddish color), just remove the Battery Cover.

If activated

Follow the 3.1 – 3.5 Disassembly instructions!

Carry out the replacement as described below.

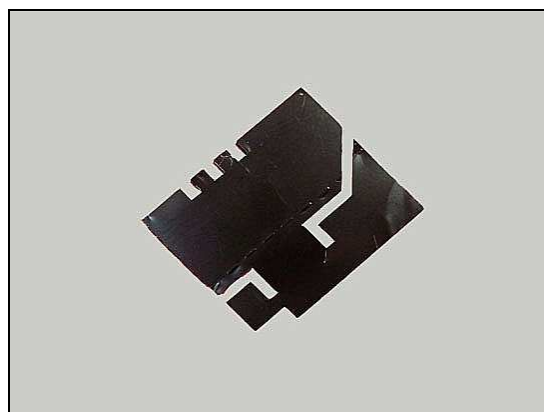
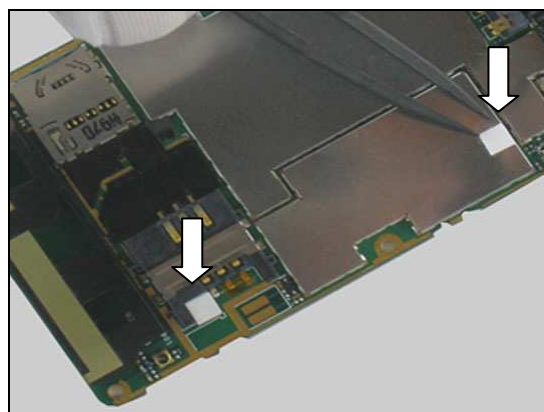
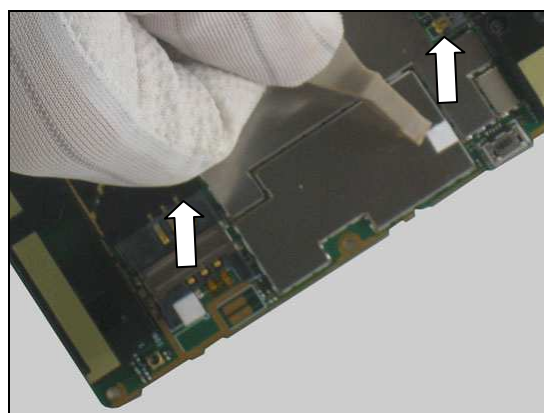
Follow the 5.4 – 5.8 Reassembly instructions!

REMOVAL

Use Front Opening Tool to tear down Water Indicator.

INSTALLATION

Use tweezer to clip the Water Indicator and attached on Shielding Cover.



4.23 SIM Mylar

Follow the 3.1 – 3.8 Disassembly instructions!

Carry out the replacement as described below.

Follow the 5.1 – 5.8 Reassembly instructions!

Replacement

REMOVAL

Use the tweezer carefully to tear down the SIM Mylar don't damage electronic component.

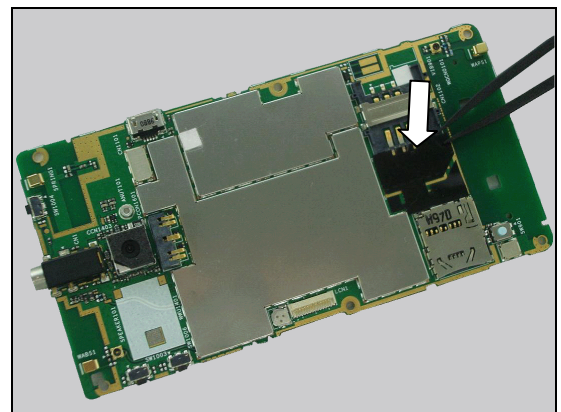
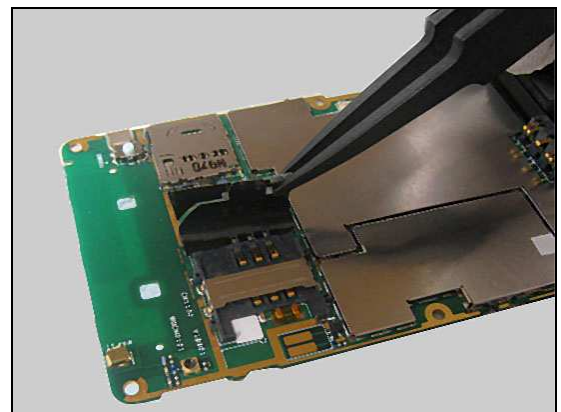
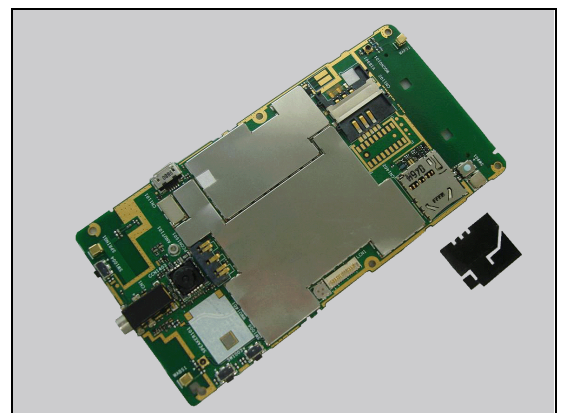
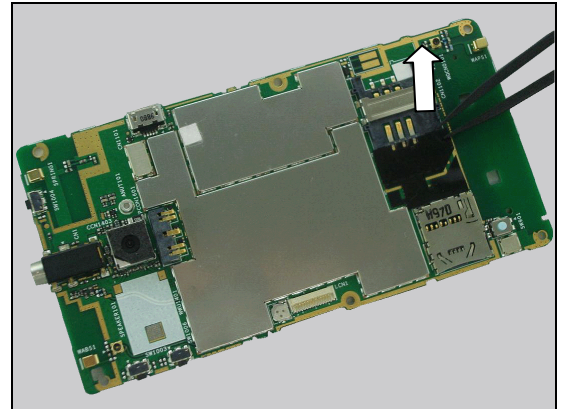
Remove the SIM Mylar.

Scrap!Not to be reused!

INSTALLATION

Use tweezer to clip the SIM Mylar to attach on PCBA should be aligned with SIM pin.

Mylar has been attached.



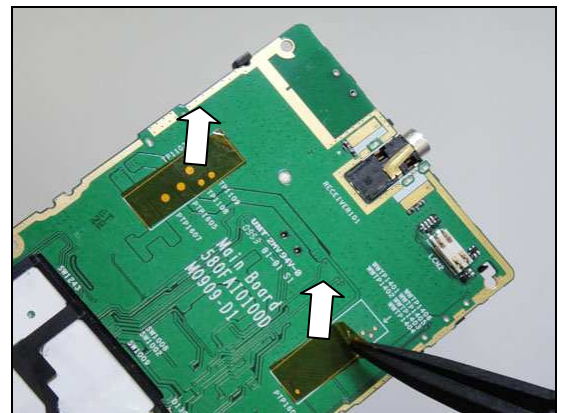
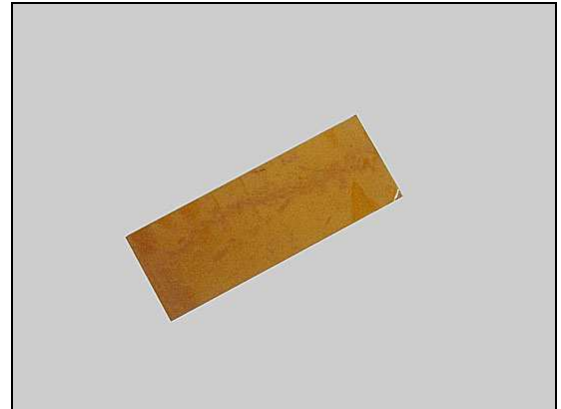
Replacement

4.24 LCM Kapton

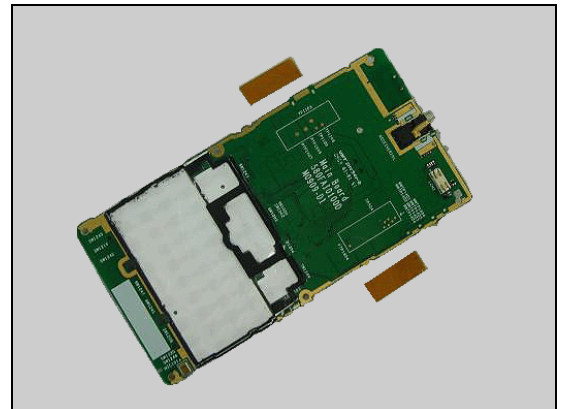
Follow the 3.1 – 3.5 Disassembly instructions!
 Carry out the replacement as described below.
Follow the 5.4 – 5.8 Reassembly instructions!

REMOVAL

Use tweezer to tear down the LCM Kapton.

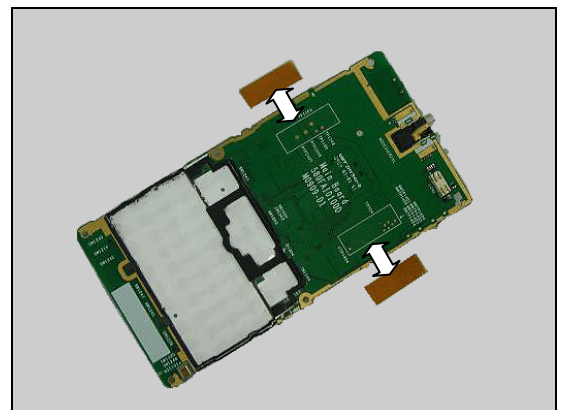


Remove the LCM Kapton.



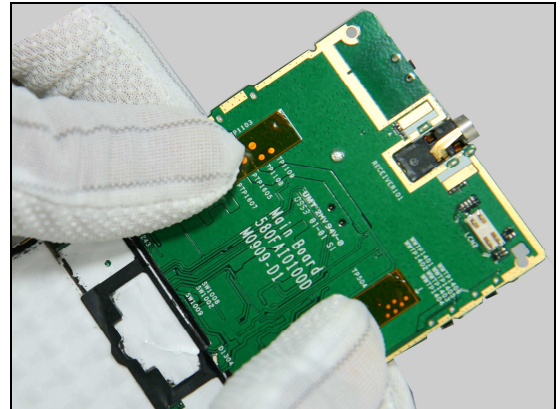
INSTALLATION

- The LCM Kapton has to be positioned inside the "White" frame
- Place the LCM Kapton on PCBA.



Replacement

Press LCM Kapton.

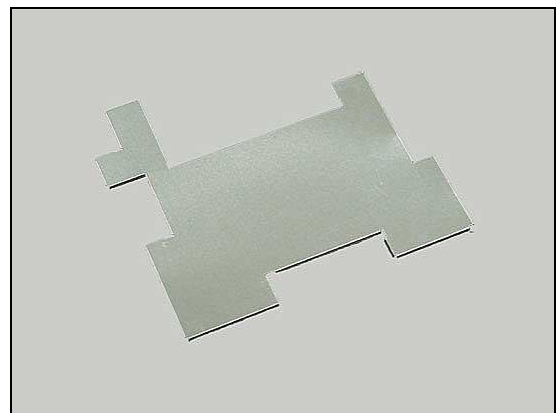


4.25 Shielding Cover BB

Follow the 3.1 – 3.8 Disassembly instructions!

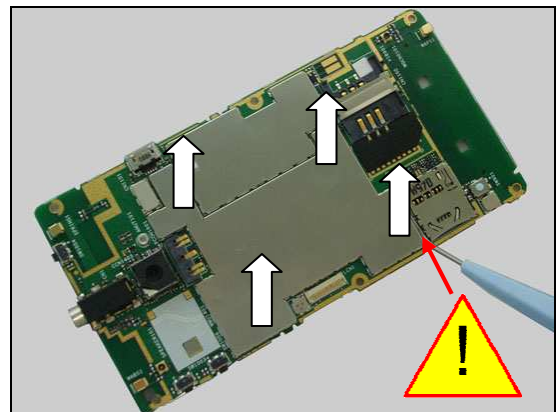
Carry out the replacement as described below.

Follow the 5.1-5.8 Reassembly instructions!



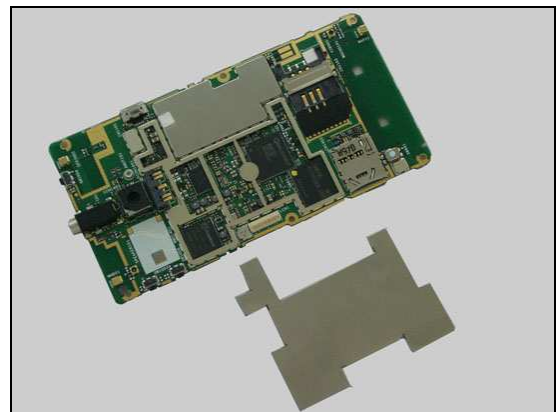
REMOVAL

Insert the Dentist hook into the corner of the Shielding Cover BB and pull upwards to release it.



Remove the Shielding Cover BB.

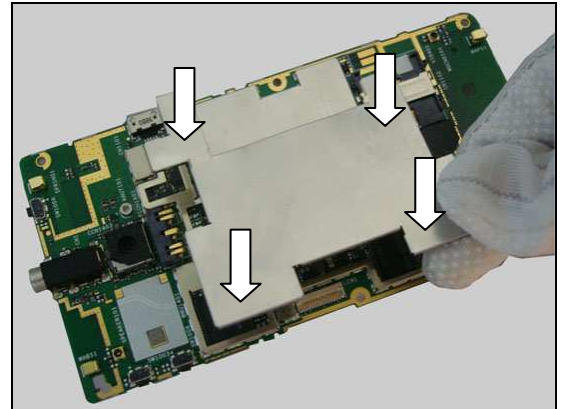
Scrap!Not to be reused!



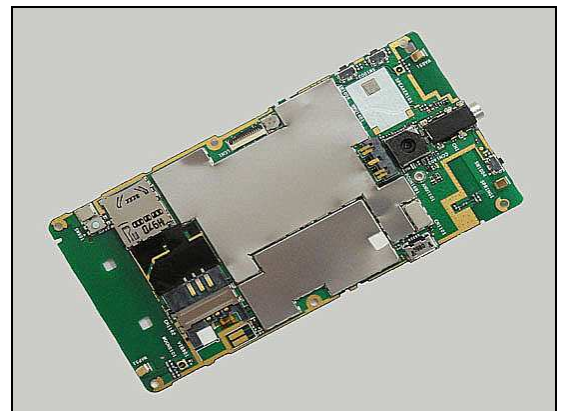
Replacement

INSTALLATION

Place Shielding Cover BB on top of the Shielding Frame and press gently until it is securely attached.



Shielding Cover BB has been placed.

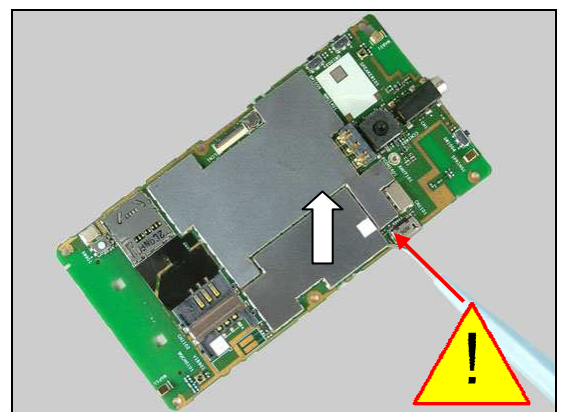
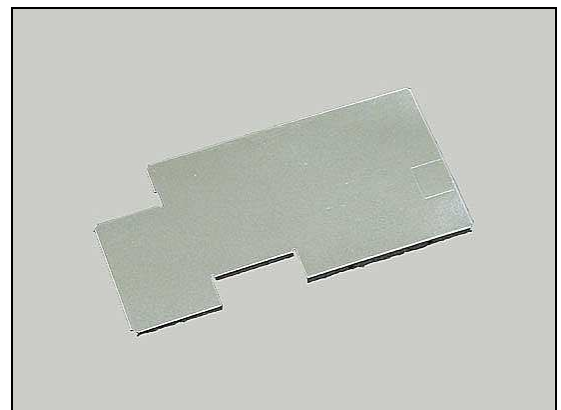


4.26 Shielding Cover RF

Follow the 3.1 – 3.5 Disassembly instructions!
Carry out the replacement as described below.
Follow the 5.1 – 5.8 Reassembly instructions!

REMOVAL

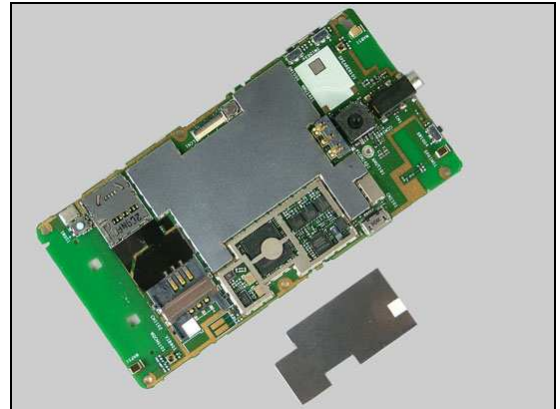
Insert the Dentist hook into the corners of the Shielding Cover RF and pull upwards to release it,



Replacement

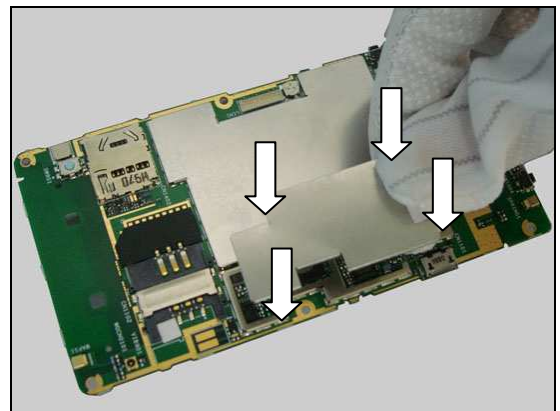
Remove the Shielding Cover RF.

Scrap! Not to be reused!

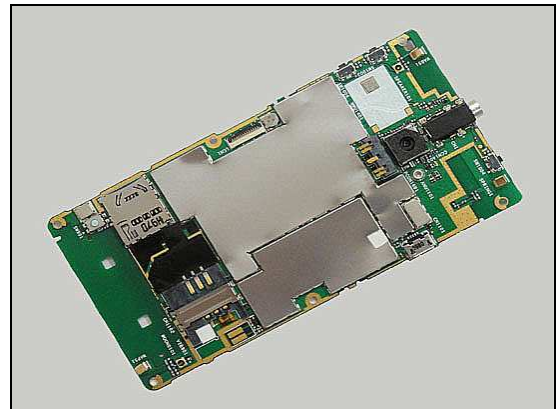


INSTALLATION

Place Shielding Cover RF on top of the Shielding Frame and press gently until it is securely attached.



Shielding Cover RF has been place.



4.27 Camera 3.2 M pixel

Follow the 3.1 – 3.6 Disassembly instructions!

Carry out the replacement as described below.

Follow the 5.3 – 5.8 Reassembly instructions!



Replacement

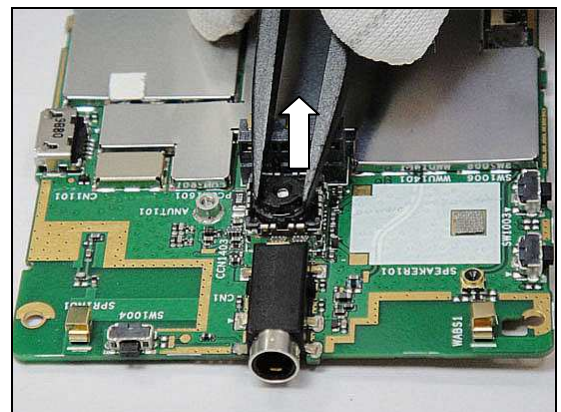
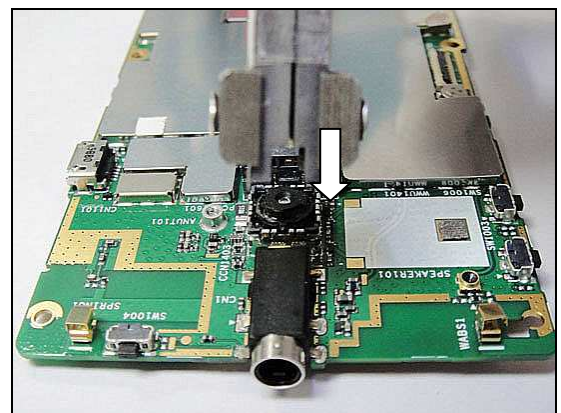
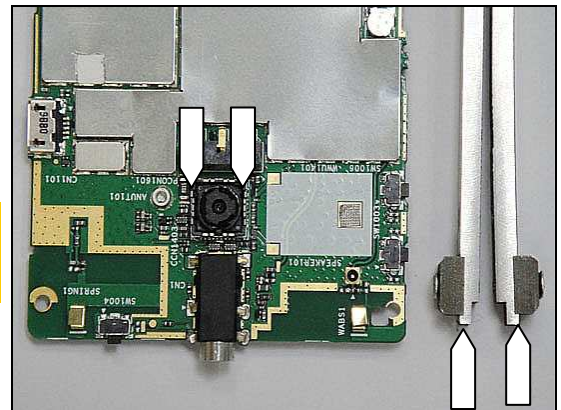
REMOVAL

Note the orientation of the blades on the Camera Removal Tool in relation to the position of the camera socket!

Insert the tool all the way into the camera socket with the Camera Removal Tool in the position shown in the picture.

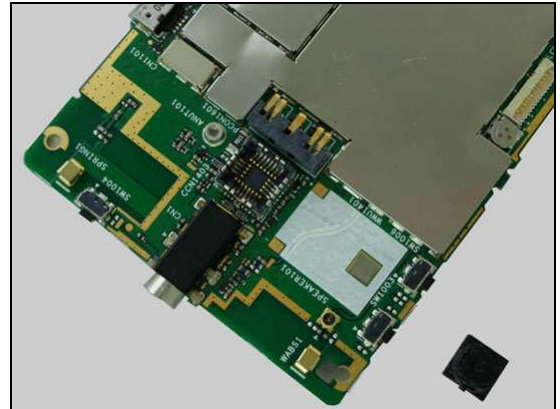
Camera Removal Tool

Use tweezer to remove the Camera.



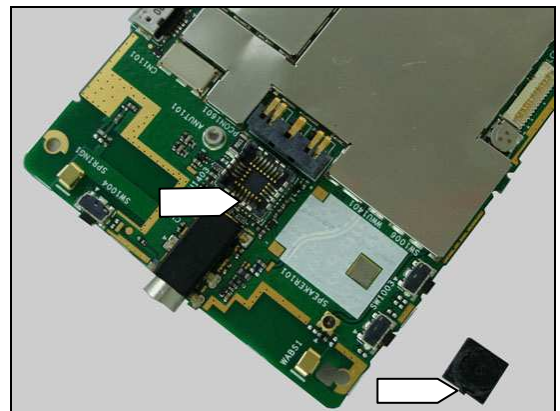
Replacement

Camera has been removed.

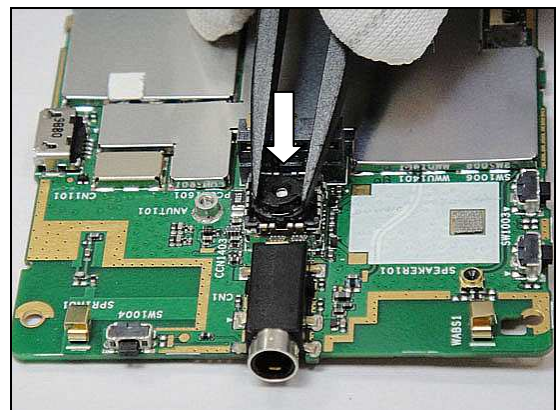


INSTALLATION

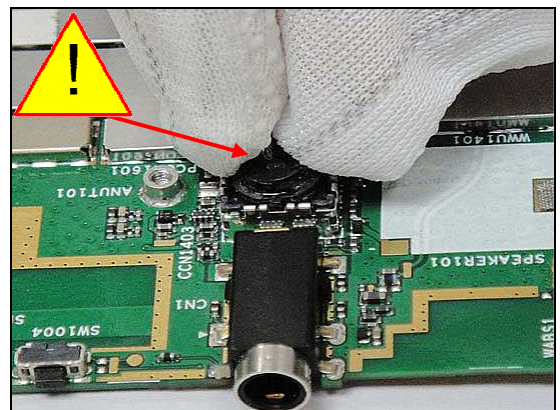
Pay attention on the direction of Camera and the camera socket.



Place the camera inside and keep it be horizontal to the socket.



And press with your fingers, without touching the camera lens, to the bottom of the socket.



Replacement

4.28 Core Unit Label

Follow the 3.1 – 3.2 Disassembly instructions!

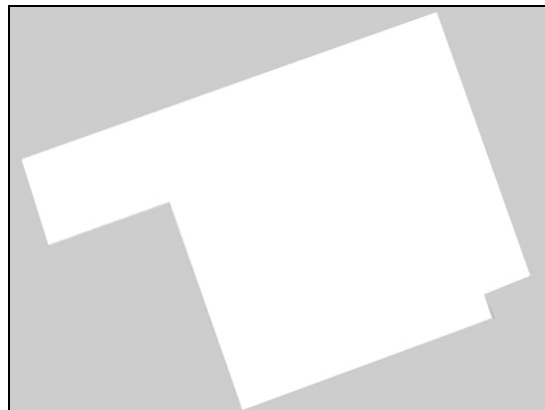
Carry out the replacement as described below.

Follow the 5.7 – 5.8 Reassembly instructions!

REMOVAL

Read the old Core Unit Label and/or write the information into the 'LabelMake' program before removal.

Carefully remove the Label by using the tweezers start from left hand side.



INSTALLATION

Check that the proper label format is loaded in the Zebra printer and write a new Label by using the 'LabelMake' software.

The Label has to be positioned inside the 'golden' frame as indicated by the pointers.



Place the new Core Unit Label as shown in the adjacent picture.

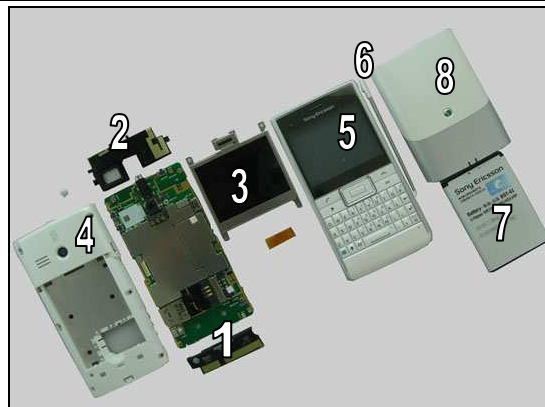
One label only is allowed!



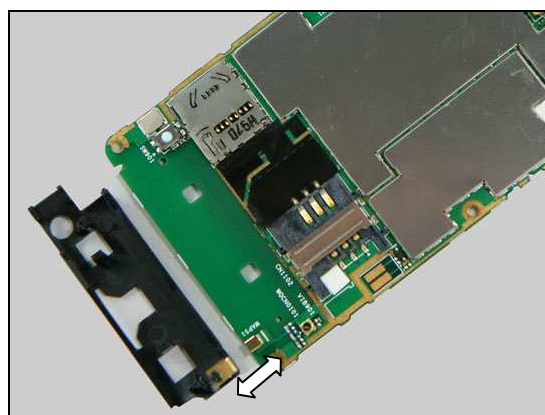
5 Reassembly

The reassembly is done in the following order:

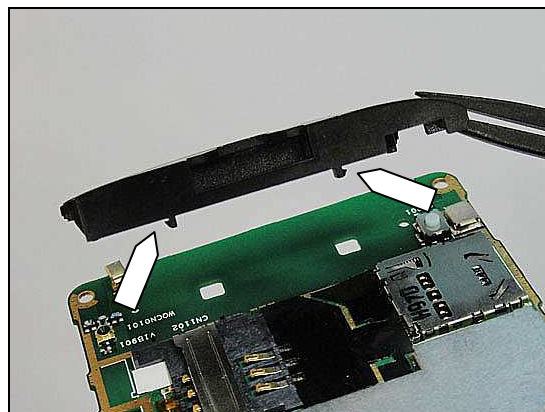
1. Phone antenna
2. Speaker Box Assy
3. LCM
4. Rear Cover
5. Front Cover Assy
6. Stylus
7. Battery
8. Battery Cover



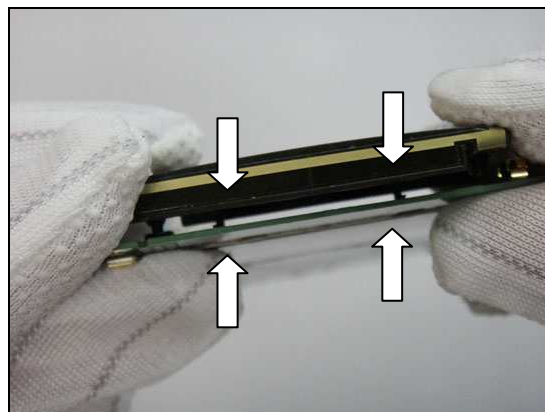
5.1 Phone Antenna



Insert the Phone Antenna two hooks into PCBA two holes.



Press like this to snap this side of the Phone Antenna to the PCBA.



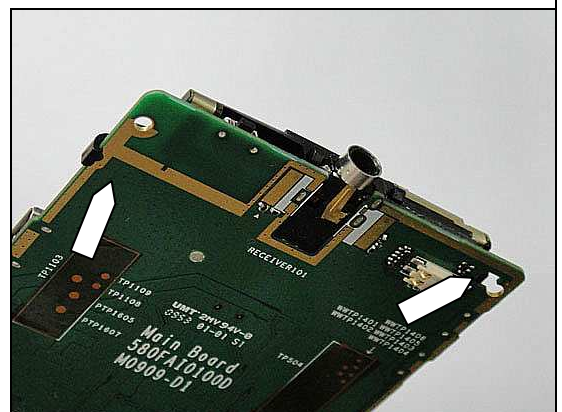
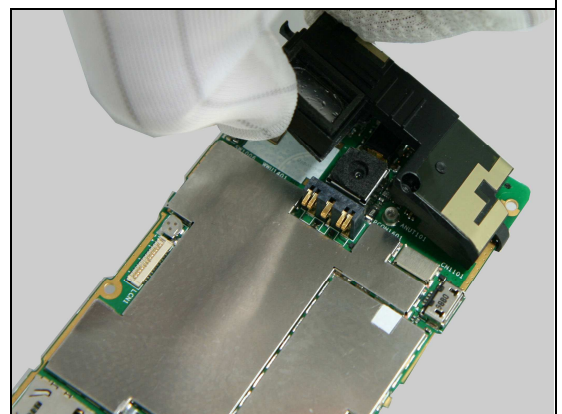
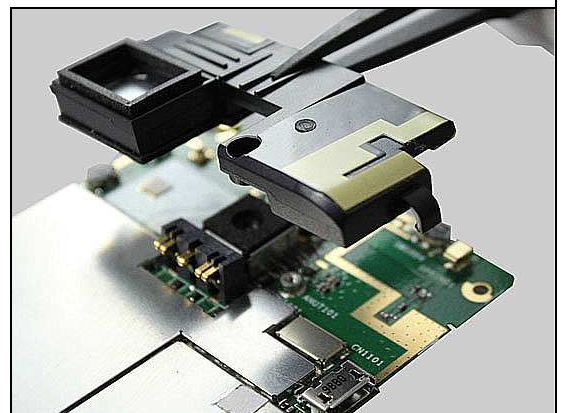
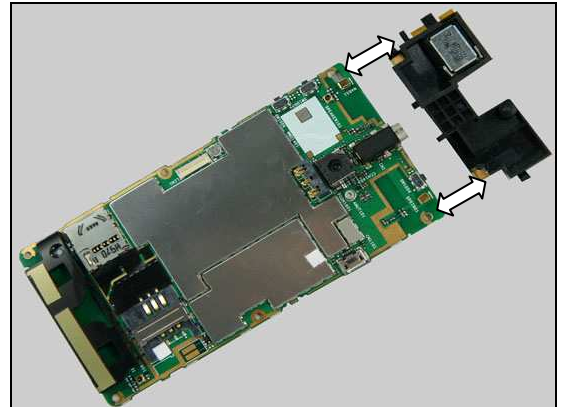
Reassembly

5.2 Speaker Box Assy

Place the Speaker Box Assy on the PCBA.

To place the Speaker Box Assy from right side.

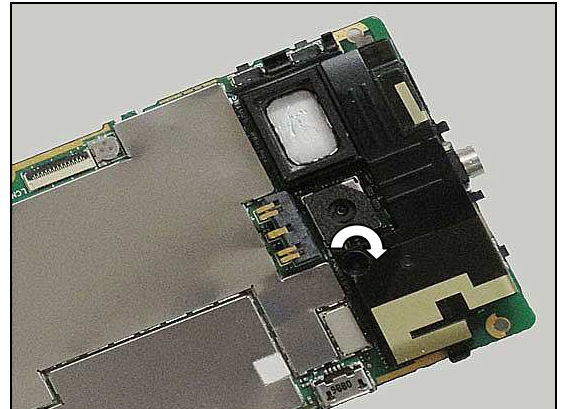
Snap the Speaker Box Assy two hooks into PCBA.





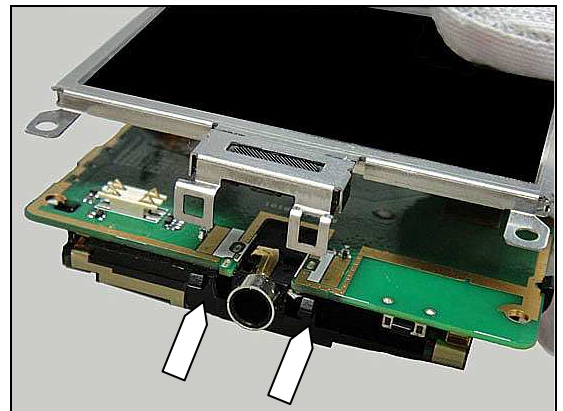
Reassembly

Apply 10 Ncm torque when tightening the Screw M1.4*3 mm with Bits (T5)

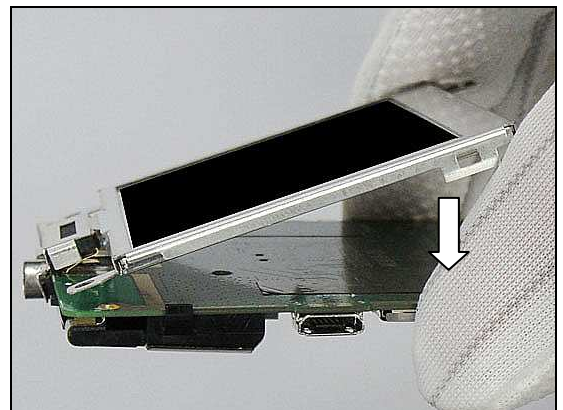


5.3 LCM

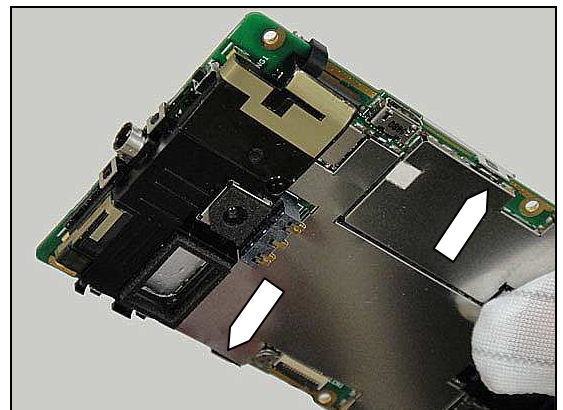
Place two hooks of the Speaker Box Assy into LCM Shielding.



1. Keep raised the bottom of the LCM approximately 30° at the bottom.
2. Press the LCM down.

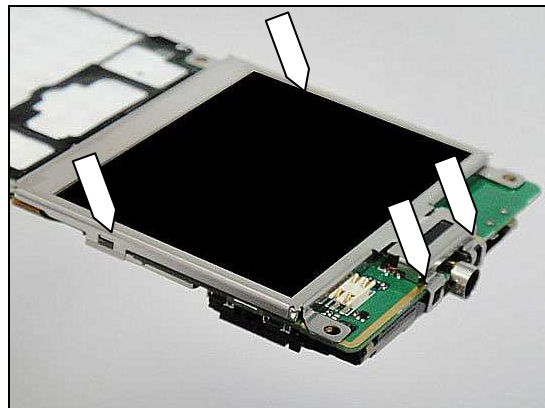


Let the LCM both side hooks secured to PCBA

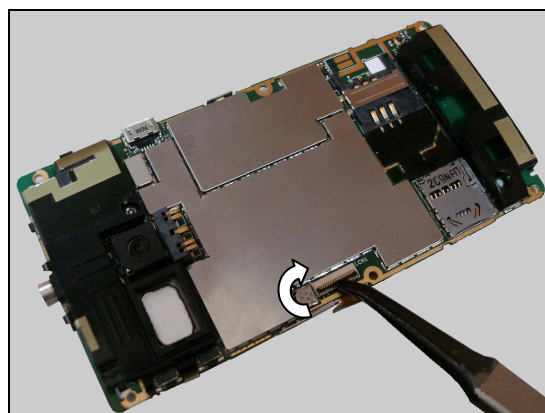


Reassembly

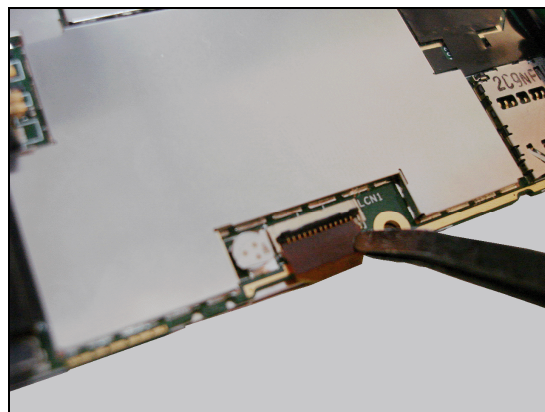
Make sure the LCM four hooks secured to PCBA



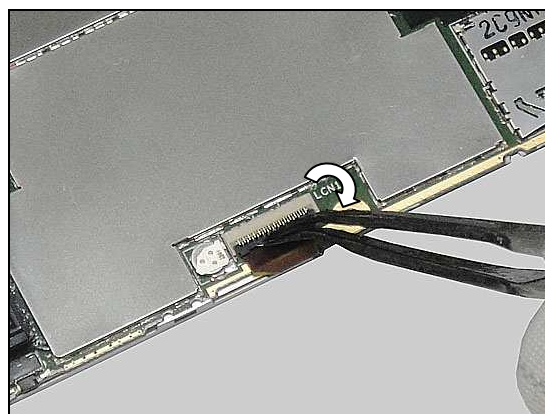
Use Flex Film Assy Tool to open the FPC connector.



Use Flex Film Assy Tool to place FPC into FPC connector.



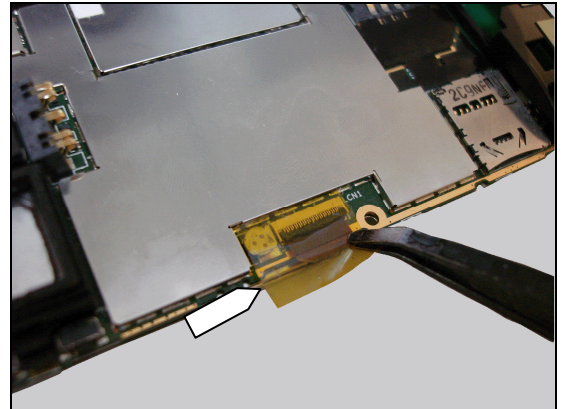
Connect the FPC and lock the FPC connector.





Reassembly

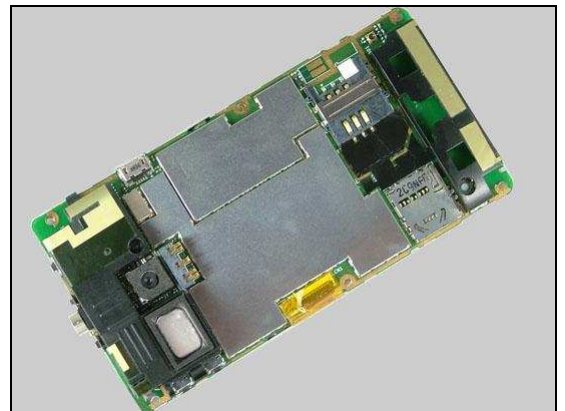
- Use Flex Film Assy Tool to clip the ZIF connector Kapton and attached on FPC socket.
- To align with the shielding cover.



Press the ZIF connector Kapton.

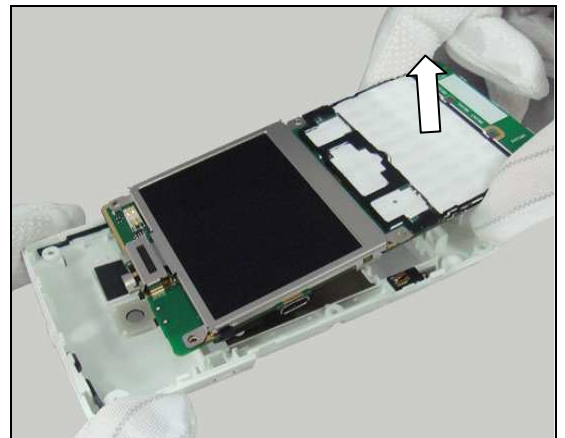


ZIF connector Kapton has been placed.



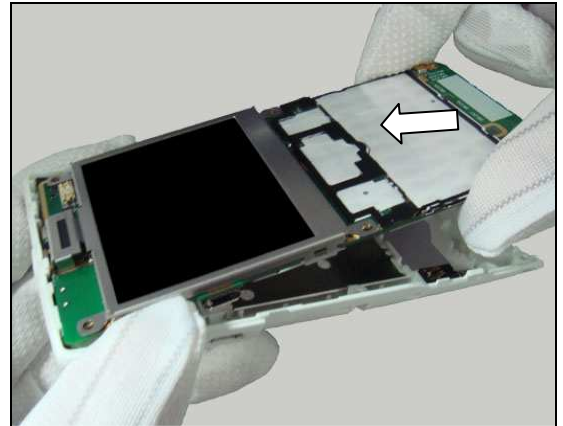
5.4 Rear Cover

Keep raising the bottom of the PCBA approximately 30° at the bottom.

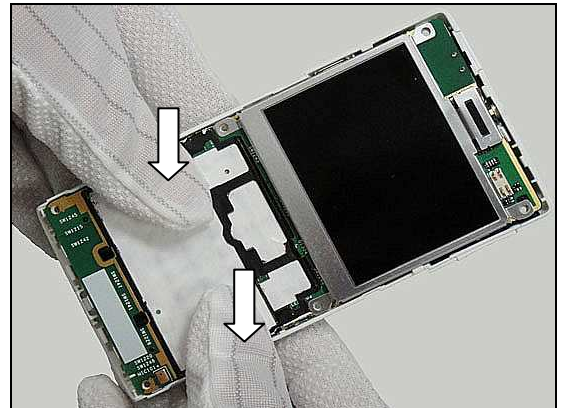


Reassembly

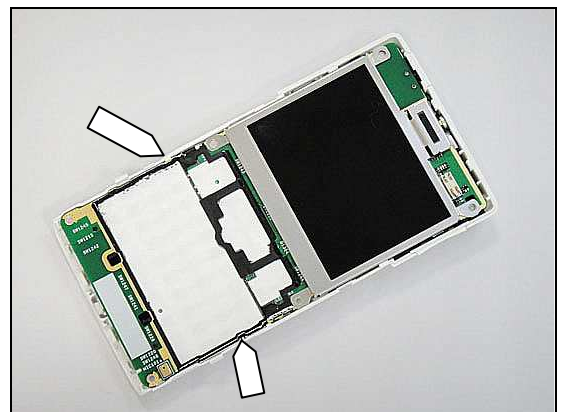
Insert the audio jack into Rear Cover.



Push the PCBA down into its proper position.

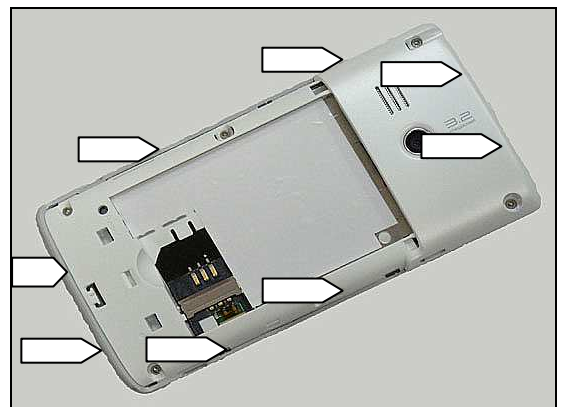


To make the two hooks snap onto the PCBA.



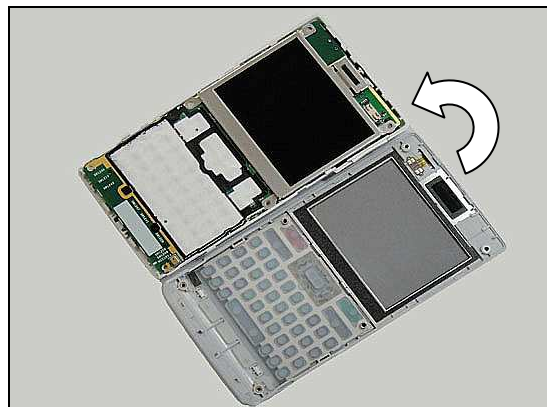
5.5 Front Cover Assy

There are eight hooks on Rear Cover Assy.

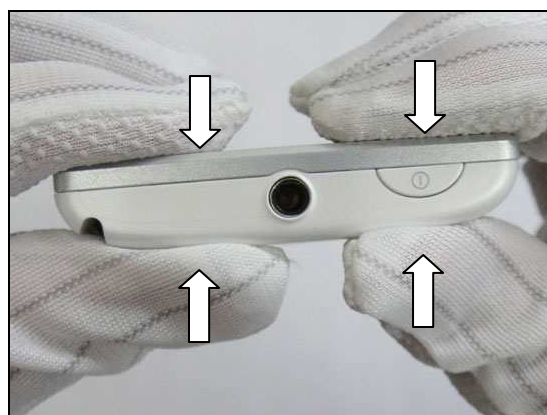


Reassembly

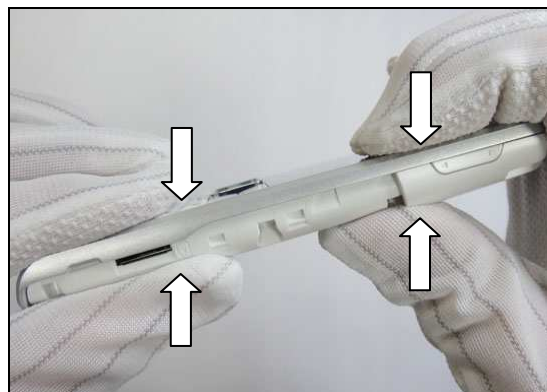
Put the Front Cover Assy on Rear Cover Assy.



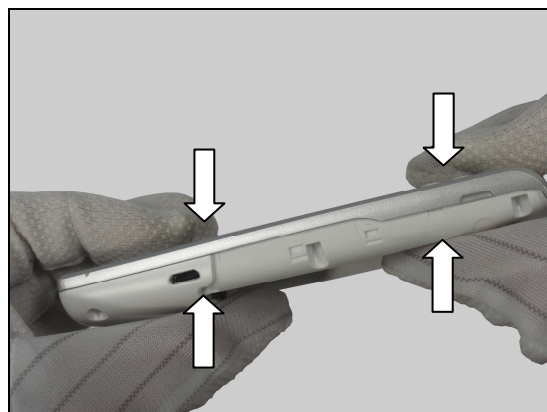
Press like this to snap the hooks follow by the direction of arrows.



Press like this to snap this side of Front Cover Assy to the Rear Cover Unit.

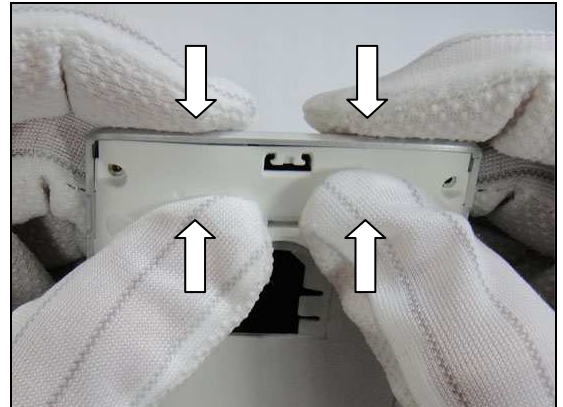


Do the same on opposite side.



Reassembly

Do the same on the bottom side of the device.



Apply 10 N.cm torque when tightening the six screws M1.6*4mm with Bits(T5).



Place the Screw Cover in its proper position with tweezers.



The Screw Cover had been placed.



Reassembly

5.6 Stylus

Place the Stylus like this.



5.7 Battery

Insert the Battery from the top side of the rear cover.



Press at the bottom to secure its position.



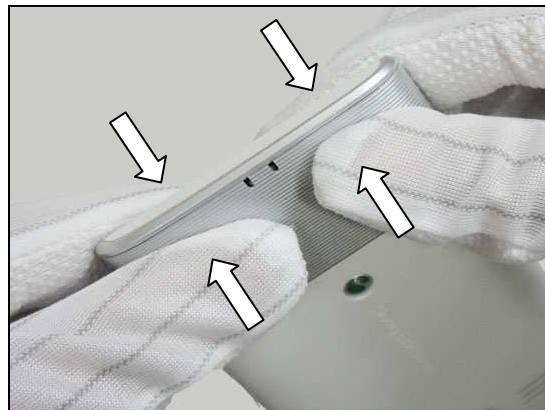
5.8 Battery Cover

Hold the Battery Cover in a 45° angle and insert the three hooks of the Battery Cover into the pocket of the Rear Cover.



Reassembly

Press on both side and make it snap onto the Rear Cover.





6 Revision History

Rev.	Date	Changes / Comments
1	2010-Jun-14	Initial release
2	2010-Jun-22	No Update